

# **Attachment B**

**Selected Drawings**

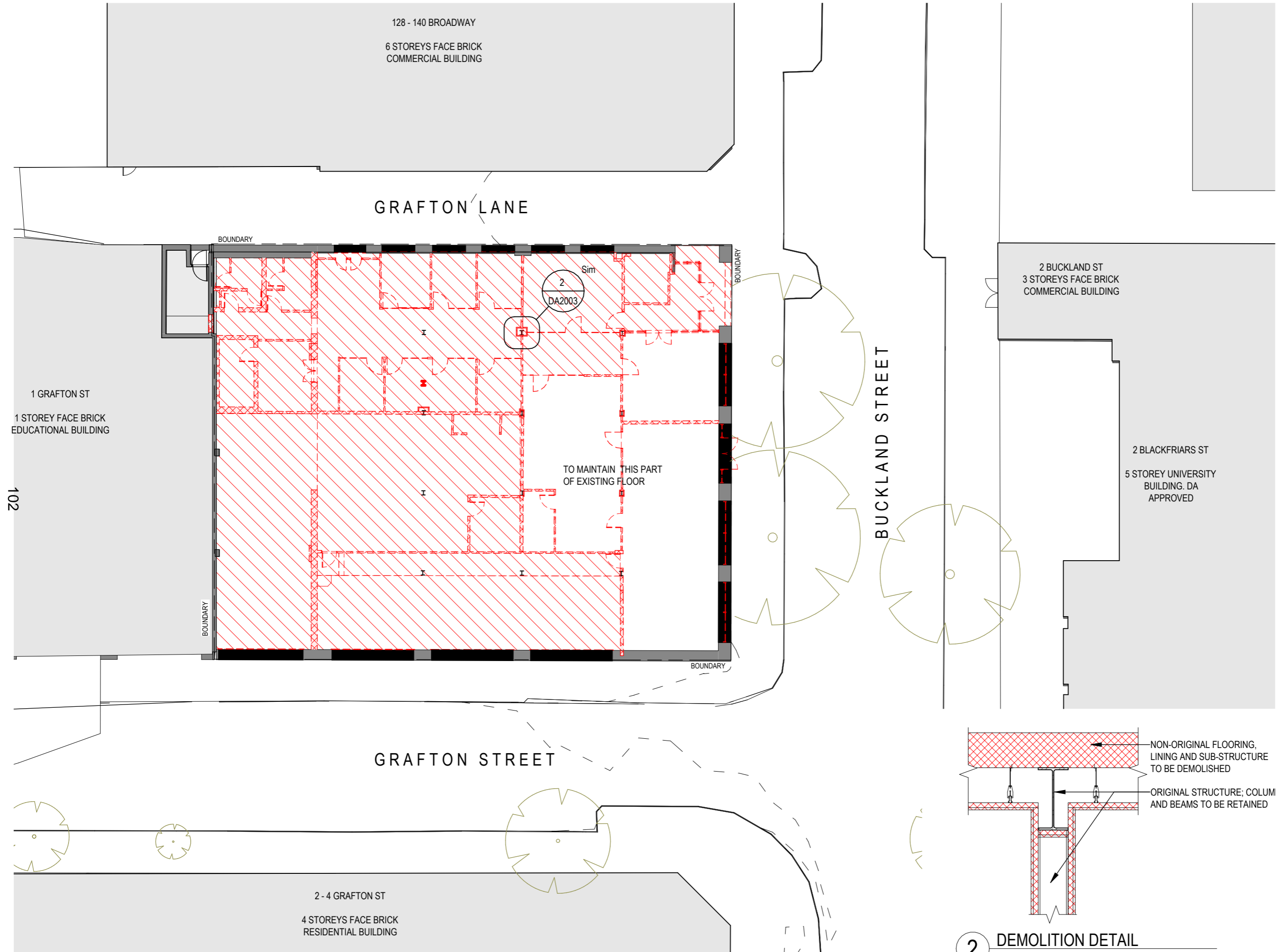


GADIGAL COUNTRY  
79 MYRTLE STREET  
CHIPPENDALE NSW, 2008 AUSTRALIA  
+61 2 9311 9222 ARCHITECTS@AJC.COM  
ABN 53 003 782 250



NOMINATED ARCHITECTS:  
MICHAEL HEENAN 5264, BRIAN MARIOTTI 9451,  
JOHN WHITTINGHAM 7030

CLIENT  
GEORGE HAY Pty Ltd  
49-51 GREEK ST  
GLEBE NSW 2037  
PROJECT NO  
21026


PROJECT LOCATION  
BUCKLAND HOUSE 19- 21 BUCKLAND ST,  
CHIPPENDALE,  
NSW 2008

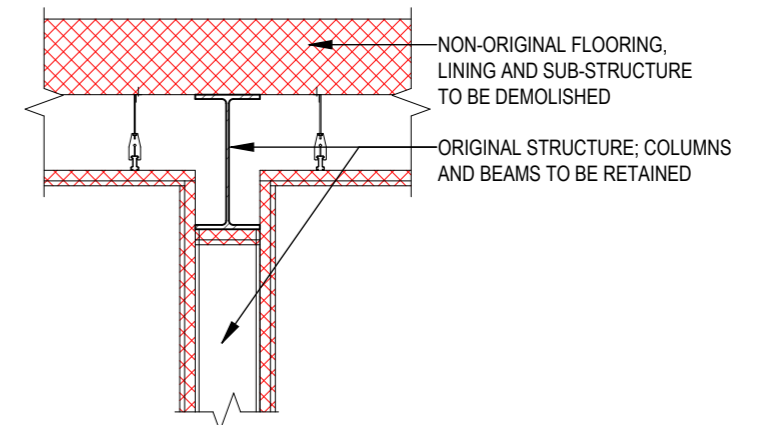


**EXISTING COLUMN LEGEND**

-  STRUCTURAL COLUMNS TO BE DEMOLISHED
-  STRUCTURAL COLUMNS TO REMAIN

**DEMOLITION LEGEND**

-  HATCHED AREA DENOTES EXIST FLOOR AREA TO BE DEMOLISHED
- EXISTING HERITAGE STRUCTURE TO BE RETAINED



**2** DEMOLITION DETAIL  
TYPICAL COLUMN AND BEAMS 1:20

**1** GROUND LEVEL 1:200

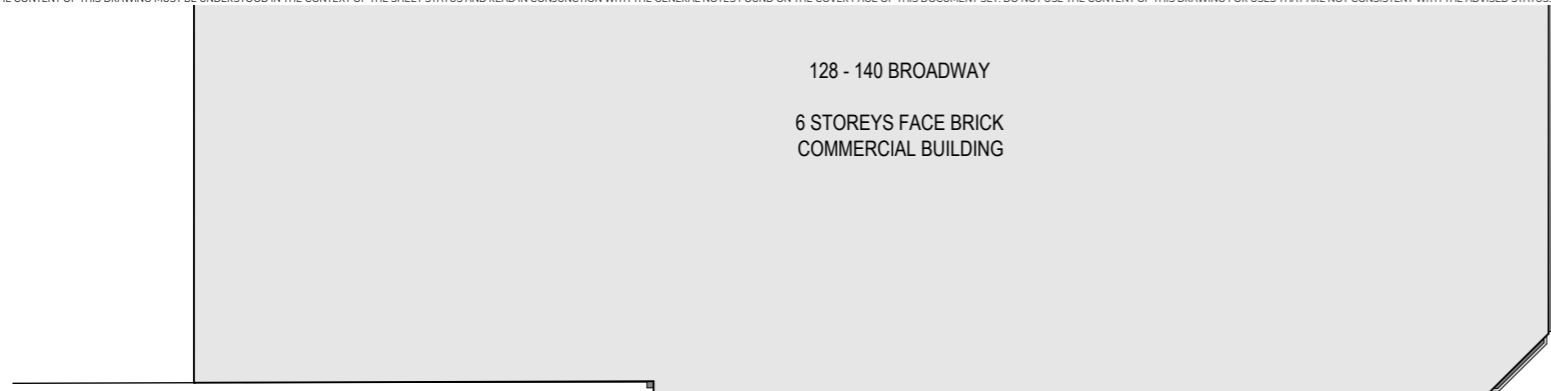
REV	DATE	DESCRIPTION	DN	AP
7	04.08.23	ISSUED FOR RFI (DA)	AA	JK
6	23.07.23	ISSUED FOR RFI (DA)	AA	JK

SHEET STATUS  
NOT FOR CONSTRUCTION

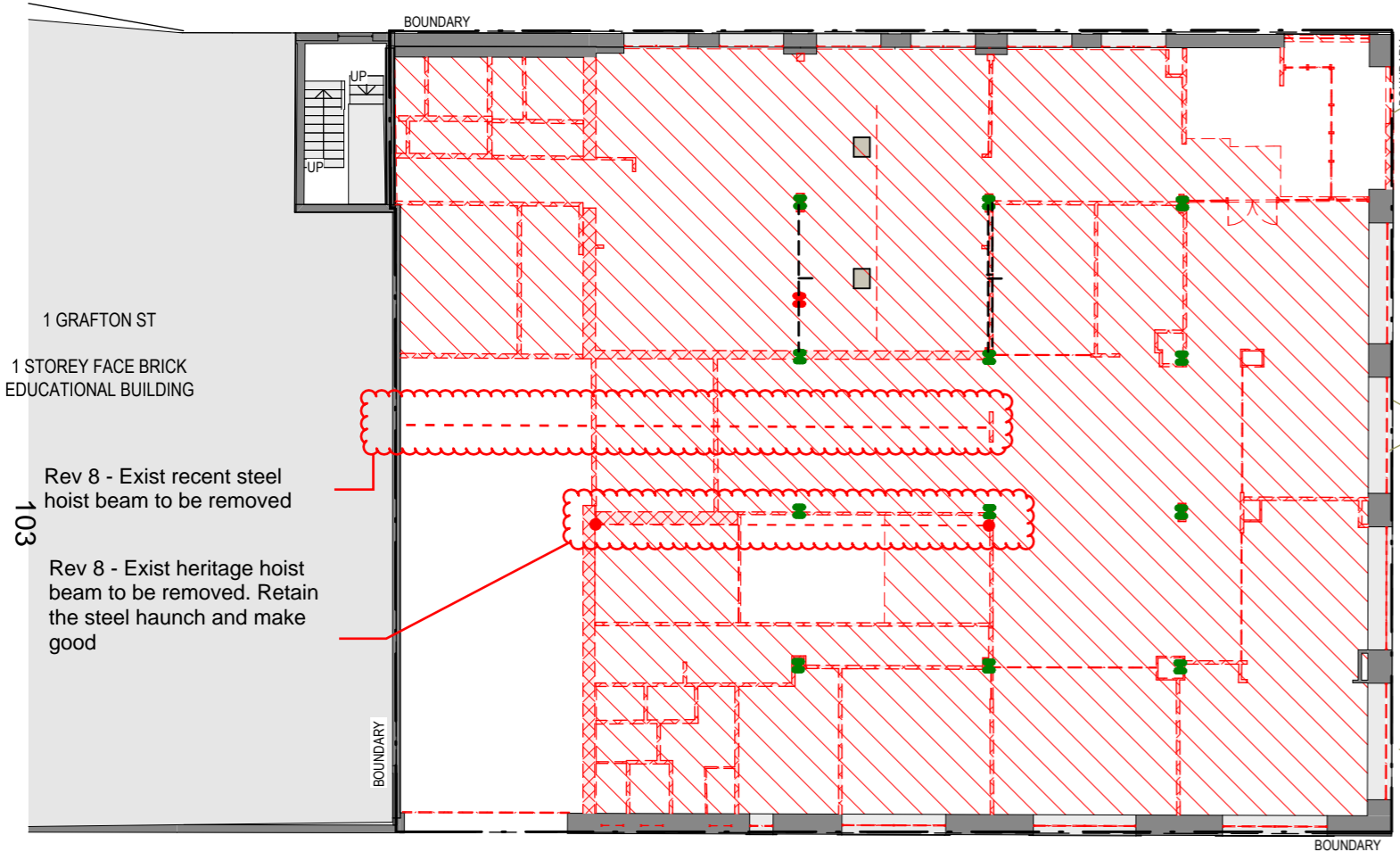
SHEET TITLE  
DEMOLITION PLAN -  
GROUND FLOOR

SCALE  
As indicated @A3

SHEET NUMBER REVISION



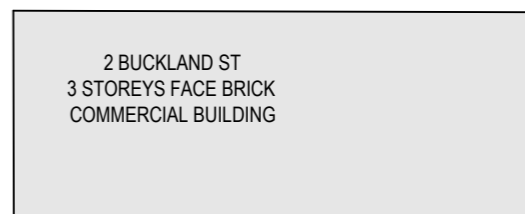
GRAFTON LANE



1 GRAFTON ST  
1 STOREY FACE BRICK  
EDUCATIONAL BUILDING

Rev 8 - Exist recent steel  
hoist beam to be removed

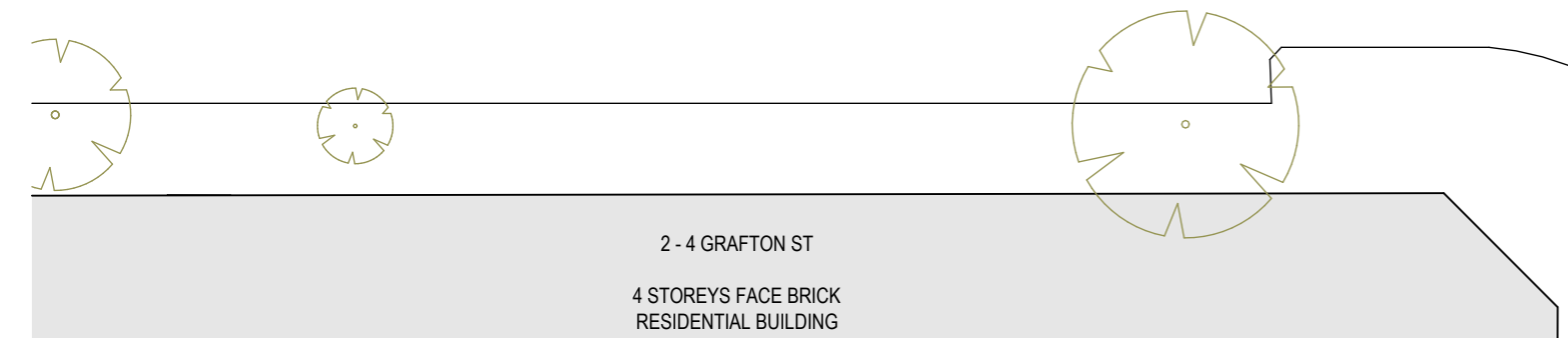
Rev 8 - Exist heritage hoist  
beam to be removed. Retain  
the steel haunch and make  
good



2 BUCKLAND ST  
3 STOREYS FACE BRICK  
COMMERCIAL BUILDING



2 BLACKFRIARS ST  
5 STOREY UNIVERSITY  
BUILDING. DA  
APPROVED

GRAFTON STREET




2 - 4 GRAFTON ST  
4 STOREYS FACE BRICK  
RESIDENTIAL BUILDING

**EXISTING COLUMN LEGEND**

-  STRUCTURAL COLUMNS TO BE DEMOLISHED
-  STRUCTURAL COLUMNS TO REMAIN

**DEMOLITION LEGEND**

-  HATCHED AREA DENOTES EXIST FLOOR AREA TO BE DEMOLISHED
- EXISTING HERITAGE STRUCTURE TO BE RETAINED

REV	DATE	DESCRIPTION	DN	AP
7	04.08.23	ISSUED FOR RFI (DA)	AA	JK
6	23.07.23	ISSUED FOR RFI (DA)	AA	JK
8	21.08.2023	ISSUED FOR CLARIFICATION	JK	

**SHEET TITLE**  
DEMOLITION PLAN - L1

**SCALE**  
As indicated @A3



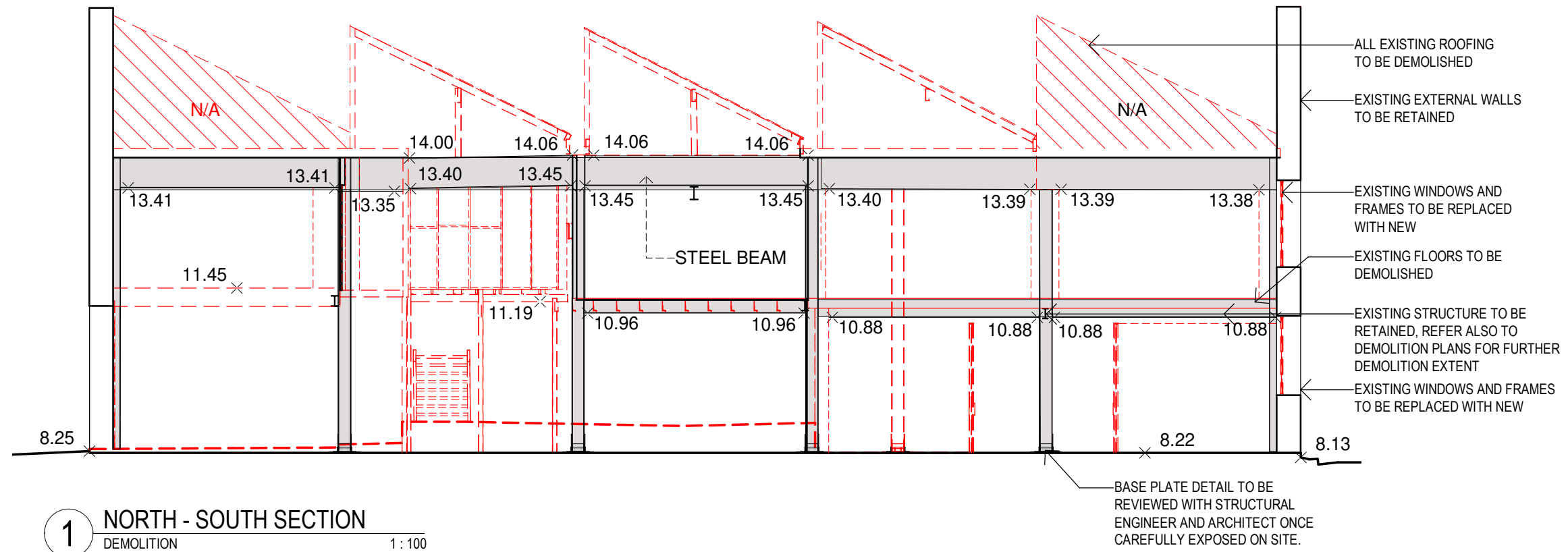


GADIGAL COUNTRY  
79 MYRTLE STREET  
CHIPPENDALE NSW, 2008 AUSTRALIA  
+61 2 9311 9222 ARCHITECTSAJC.COM  
ABN 53 003 782 250

NOMINATED ARCHITECTS:  
MICHAEL HEENAN 5284, BRIAN MARIOTTI 9451,  
JOHN WHITTINGHAM 7030

CLIENT  
GEORGE HAY Pty Ltd  
49-51 GREEK ST  
GLEBE NSW 2037  
PROJECT NO  
21026

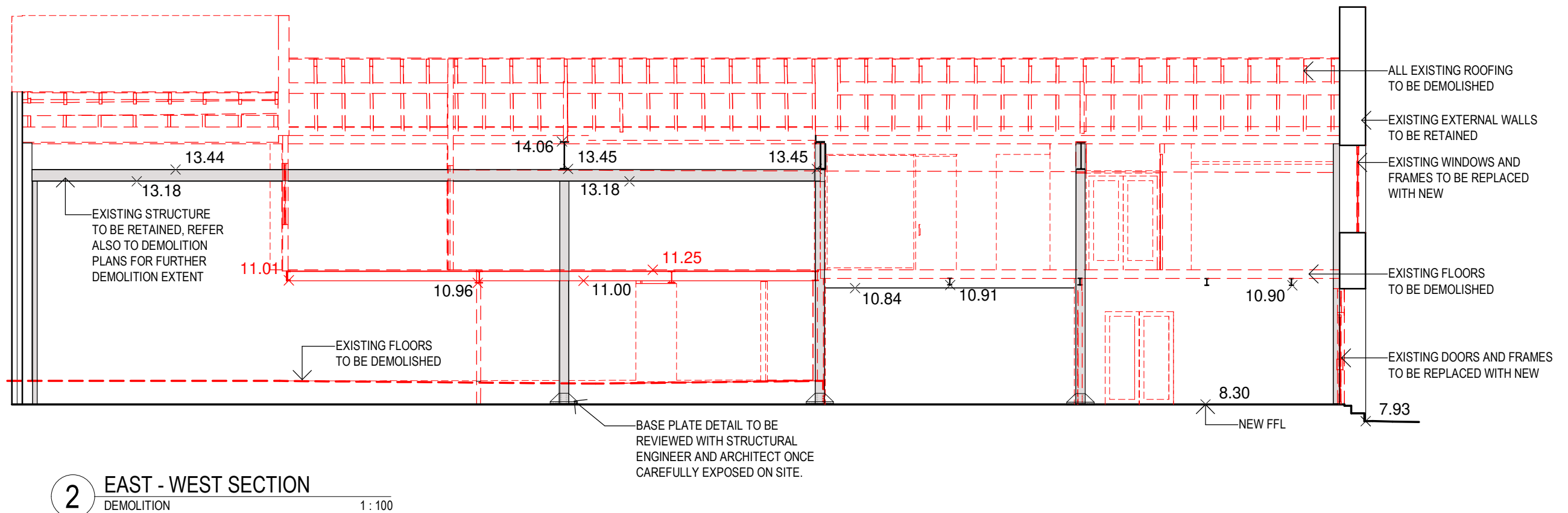
PROJECT LOCATION  
BUCKLAND HOUSE 19-21 BUCKLAND ST,  
CHIPPENDALE, NSW 2008



**DEMOLITION LEGEND**

- HATCHED AREA DENOTES EXISTING ELEMENTS TO BE DEMOLISHED
- EXISTING HERITAGE STRUCTURE TO BE RETAINED

104



REV	DATE	DESCRIPTION	DN	AP
1	28.08.23	FOR INFORMATION	HJ	JK

SHEET STATUS  
NOT FOR CONSTRUCTION

SHEET TITLE  
DEMOLITION SECTIONS

SCALE  
1:100 @A3

SHEET NUMBER REVISION



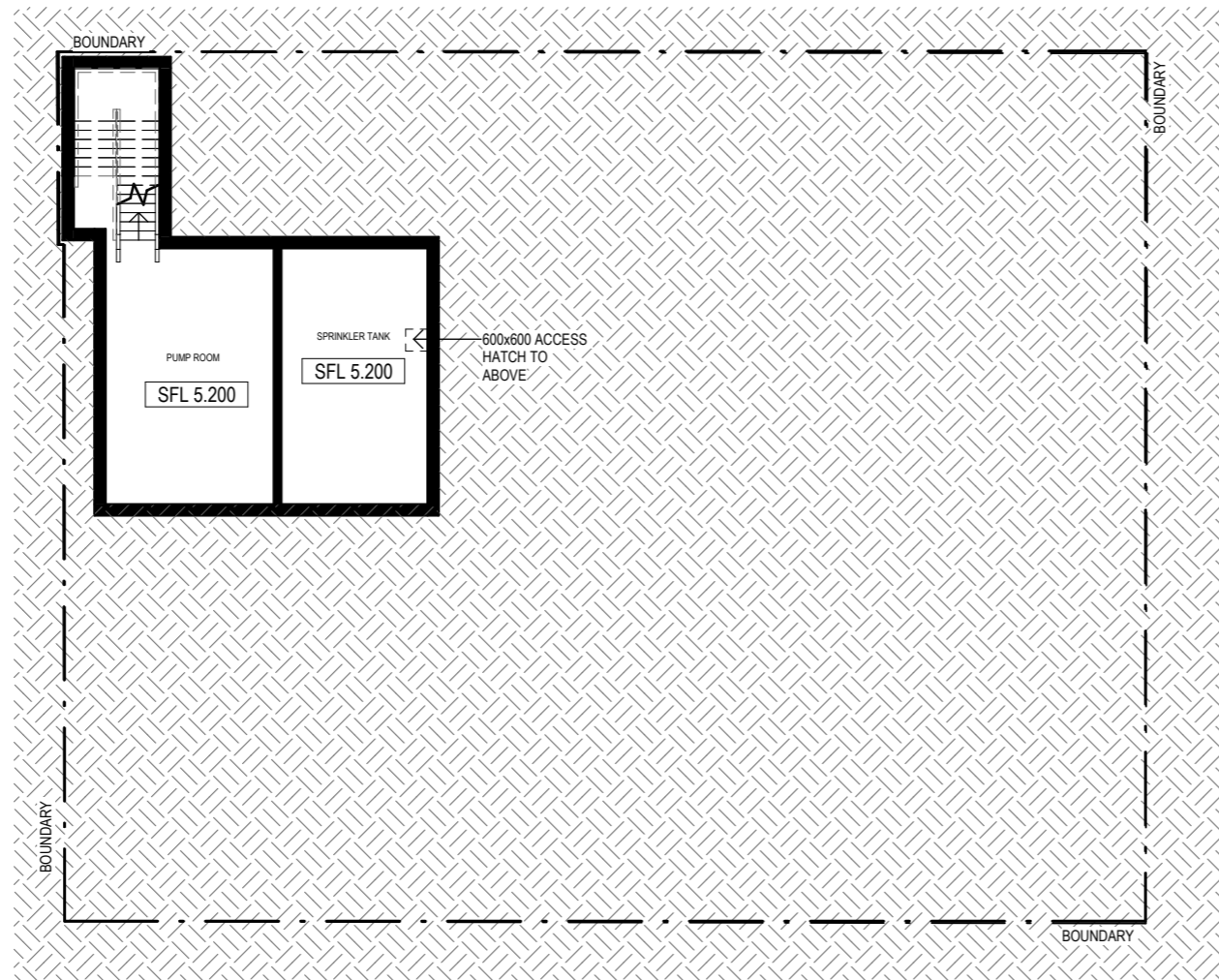
GADIGAL COUNTRY  
79 MYRTLE STREET  
CHIPPENDALE NSW, 2008 AUSTRALIA  
+61 2 9311 9222 ARCHITECTSAJC.COM  
ABN 53 003 782 250

NOMINATED ARCHITECTS:  
MICHAEL HEENAN 5264, BRIAN MARIOTTI 9451,  
JOHN WHITTINGHAM 7030

CLIENT  
GEORGE HAY Pty Ltd  
49-51 GREEK ST  
GLEBE NSW 2037  
PROJECT NO  
2102a

PROJECT LOCATION  
BUCKLAND HOUSE 19- 21 BUCKLAND ST,  
CHIPPENDALE,  
NSW 2008

105



REV	DATE	DESCRIPTION	DN	AP
7	04.08.23	ISSUED FOR RFI (DA)	AA	JK
6	23.07.23	ISSUED FOR RFI (DA)	AA	JK

**SHEET STATUS**  
NOT FOR CONSTRUCTION

SHEET TITLE  
BASEMENT LEVEL PLAN



SCALE

SHEET NUMBER REVISION

DA2100 7



GADIGAL COUNTRY  
79 MYRTLE STREET  
CHIPPENDALE NSW, 2008 AUSTRALIA  
+61 2 9311 9222 ARCHITECTSAJC.COM  
ABN 53 003 782 250

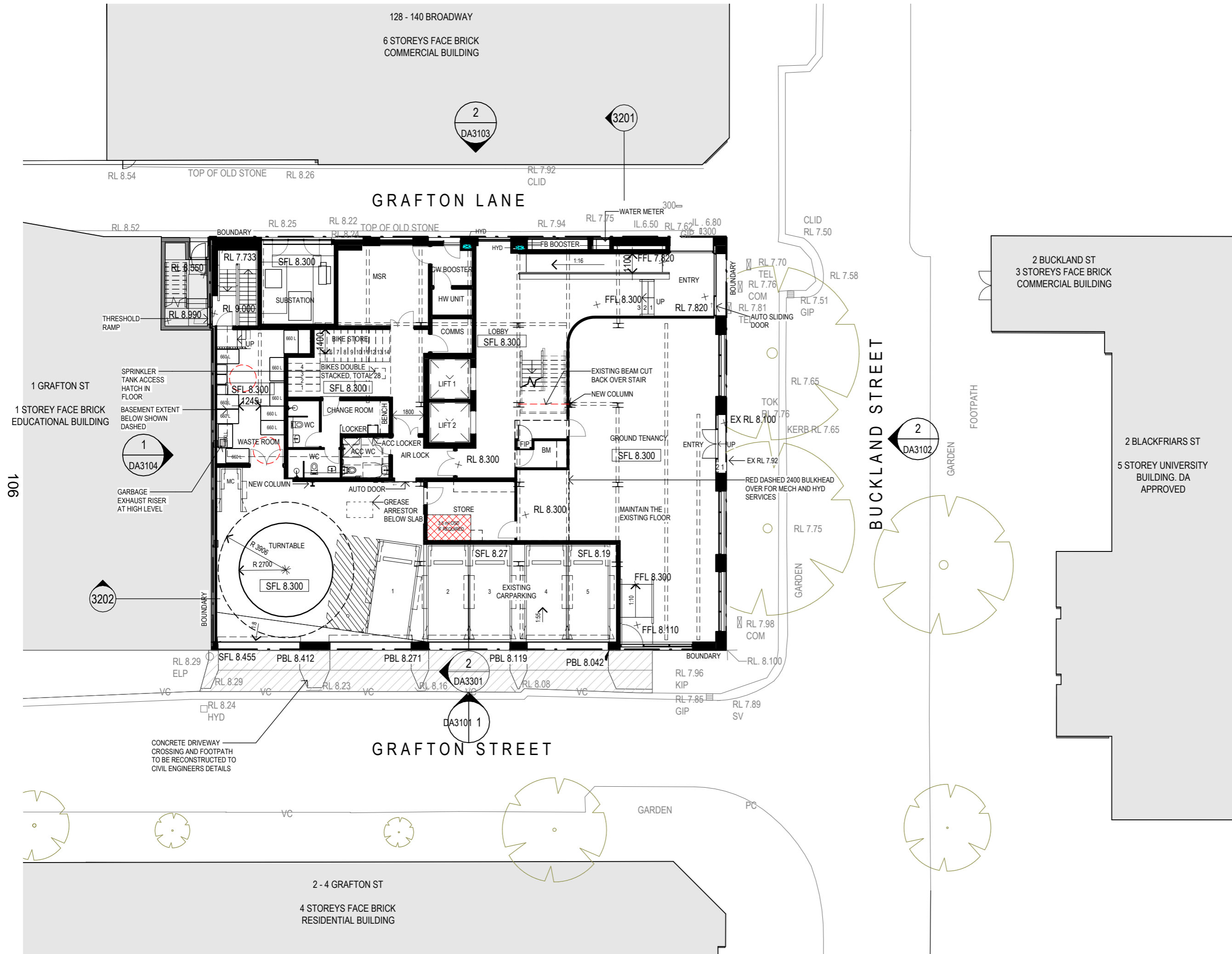
NOMINATED ARCHITECTS:  
MICHAEL HEENAN 5264, BRIAN MARIOTTI 9451,  
JOHN WHITTINGHAM 7030

CLIENT  
GEORGE HAY Pty Ltd  
49-51 GREEK ST  
GLEBE NSW 2037  
PROJECT NO  
21026

PROJECT  
BUCKLAND HOUSE

LOCATION  
19- 21 BUCKLAND ST,  
CHIPPENDALE,  
NSW 2008

\*PBL  
PROPOSED BOUNDARY LEVEL



REV	DATE	DESCRIPTION	DN	AP
18	04.08.23	ISSUED FOR RFI (DA)	AA	JK
17	23.07.23	ISSUED FOR RFI (DA)	AA	JK

SHEET STATUS  
NOT FOR CONSTRUCTION

SHEET TITLE  
FLOOR PLAN GROUND

SCALE  
1:200 @A3

SHEET NUMBER  
DA2101

REVISION  
18

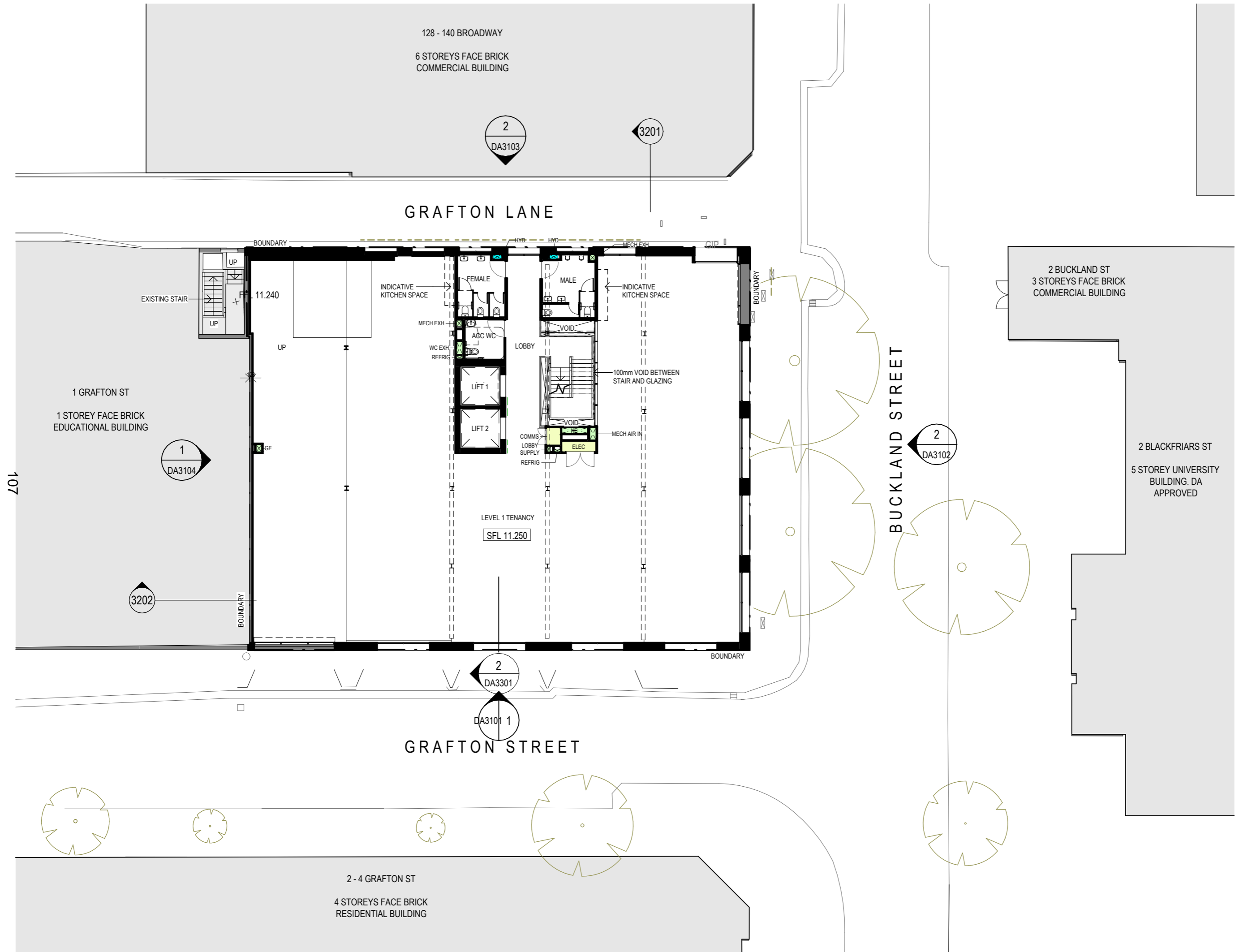


GADIGAL COUNTRY  
79 MYRTLE STREET  
CHIPPENDALE NSW, 2008 AUSTRALIA  
+61 2 9311 9222 ARCHITECTS@AJC.COM  
ABN 53 003 782 250

NOMINATED ARCHITECTS:  
MICHAEL HEENAN 5264, BRIAN MARIOTTI 9451,  
JOHN WHITTINGHAM 7030

CLIENT  
GEORGE HAY Pty Ltd  
49-51 GREEK ST  
GLEBE NSW 2037  
PROJECT NO  
21026

PROJECT LOCATION  
BUCKLAND HOUSE 19- 21 BUCKLAND ST,  
CHIPPENDALE, NSW 2008



REV	DATE	DESCRIPTION	DN	AP
18	04.08.23	ISSUED FOR RFI (DA)	AA	JK
17	23.07.23	ISSUED FOR RFI (DA)	AA	JK

SHEET STATUS  
NOT FOR CONSTRUCTION

SHEET TITLE  
FLOOR PLAN - L1

SCALE  
1:200 @A3

SHEET NUMBER REVISION

DA2102 18

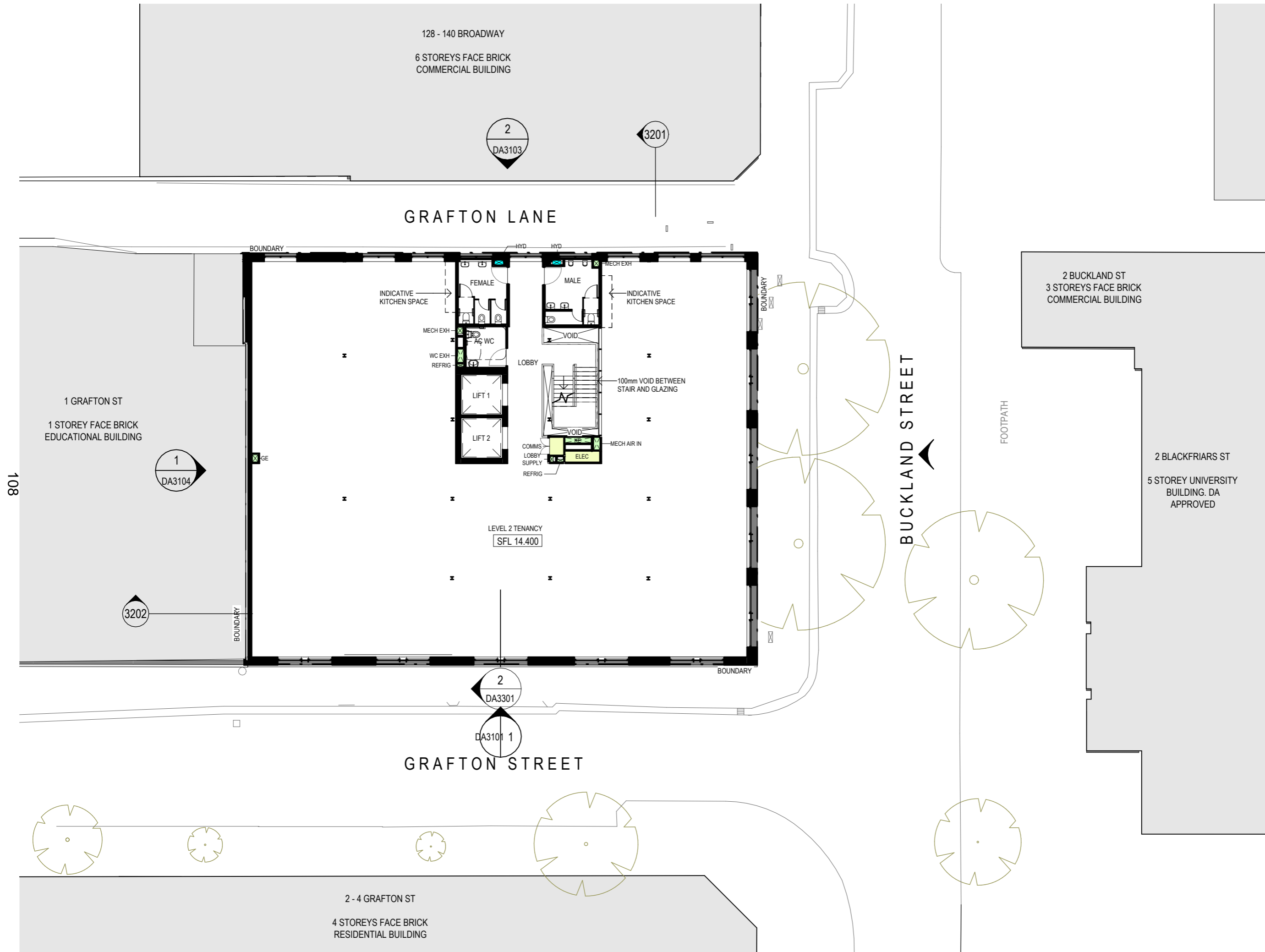


GADIGAL COUNTRY  
79 MYRTLE STREET  
CHIPPENDALE NSW, 2008 AUSTRALIA  
+61 2 9311 9222 ARCHITECTSAJC.COM  
ABN 53 003 782 250

NOMINATED ARCHITECTS:  
MICHAEL HEENAN 5264, BRIAN MARIOTTI 9451,  
JOHN WHITTINGHAM 7030

CLIENT  
GEORGE HAY Pty Ltd  
49-51 GREEK ST  
GLEBE NSW 2037  
PROJECT NO  
21026

PROJECT LOCATION  
BUCKLAND HOUSE 19- 21 BUCKLAND ST,  
CHIPPENDALE, NSW 2008



REV	DATE	DESCRIPTION	DN	AP
11	04.08.23	ISSUED FOR RFI (DA)	AA	JK

SHEET STATUS  
NOT FOR CONSTRUCTION

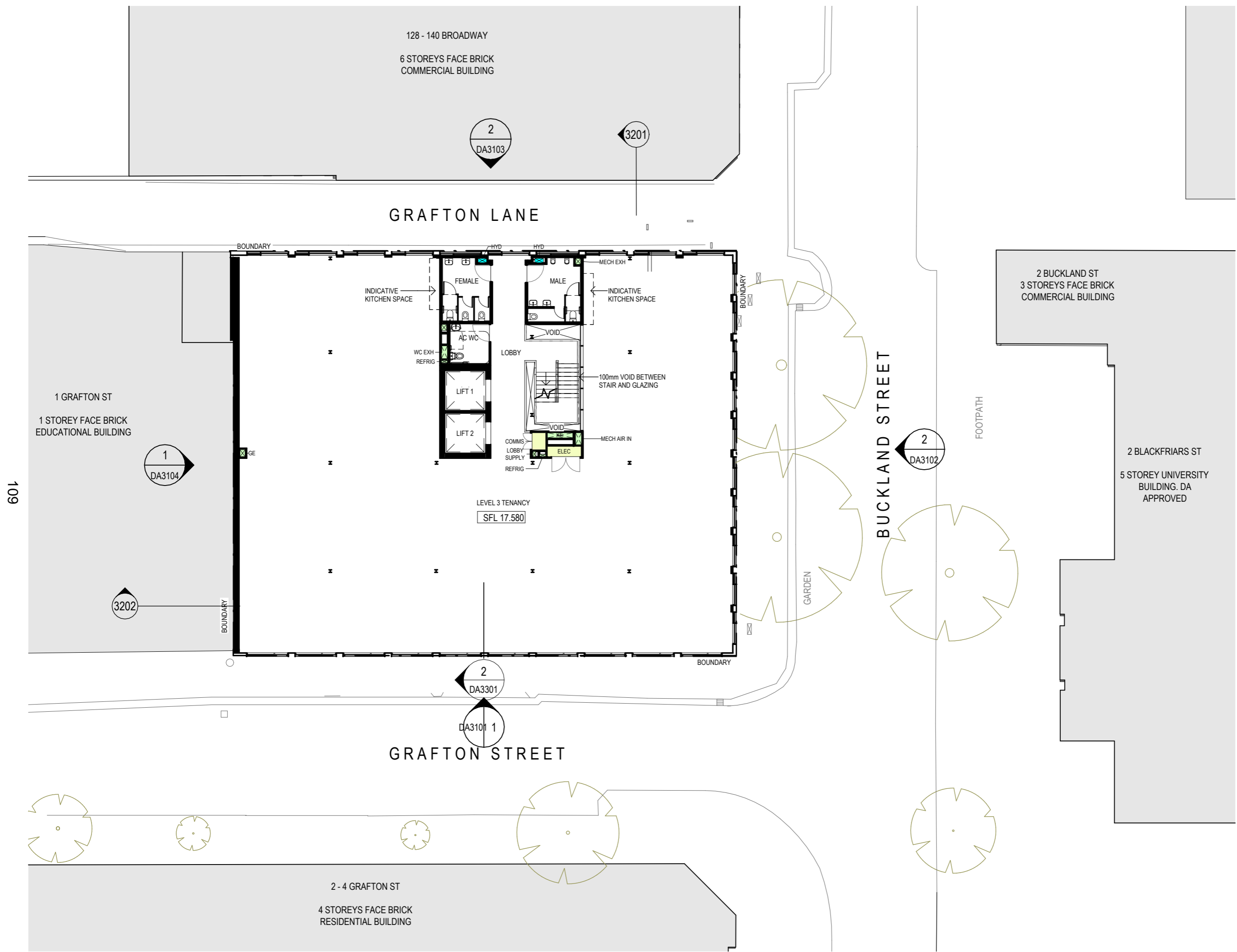
SHEET TITLE  
FLOOR PLAN - L2

SCALE  
1:200 @A3



SHEET NUMBER REVISION





REV	DATE	DESCRIPTION	DN	AP
3	04.08.23	ISSUED FOR RFI (DA)	AA	JK
2	23.07.23	ISSUED FOR RFI (DA)	AA	JK

SHEET STATUS  
NOT FOR CONSTRUCTION

SHEET TITLE  
FLOOR PLAN - L3

SCALE  
1:200 @A3

SHEET NUMBER	REVISION
DA2104	3

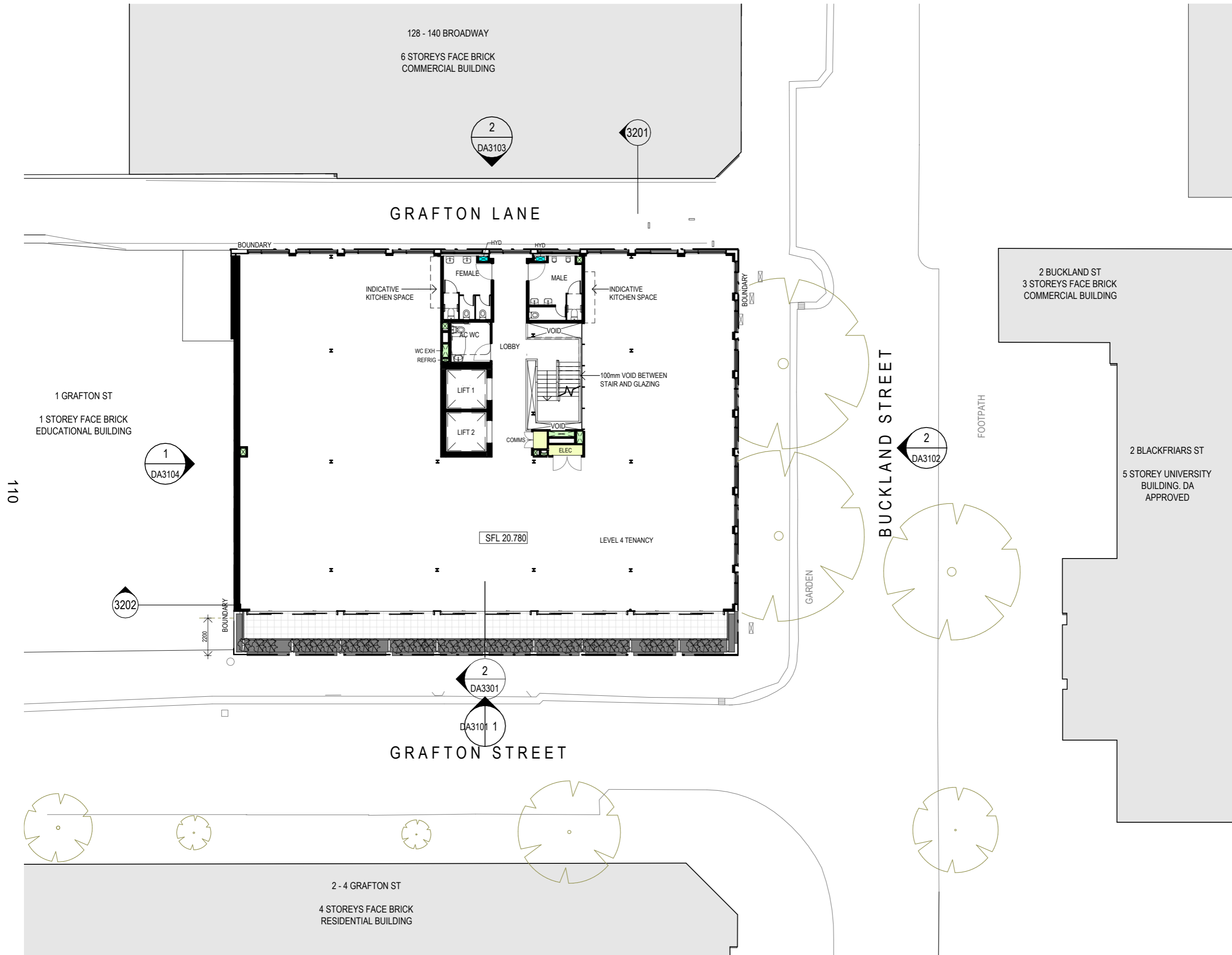


GADIGAL COUNTRY  
79 MYRTLE STREET  
CHIPPENDALE NSW, 2008 AUSTRALIA  
+61 2 9311 9222 ARCHITECTSAJC.COM  
ABN 53 003 782 250

NOMINATED ARCHITECTS:  
MICHAEL HEENAN 5264, BRIAN MARIOTTI 9451,  
JOHN WHITTINGHAM 7030

CLIENT  
GEORGE HAY Pty Ltd  
49-51 GREEK ST  
GLEBE NSW 2037  
PROJECT NO  
21026

PROJECT LOCATION  
BUCKLAND HOUSE 19- 21 BUCKLAND ST,  
CHIPPENDALE,  
NSW 2008



110

REV	DATE	DESCRIPTION	DN	AP
1	04.08.23	ISSUED FOR RFI (DA)	AA	JK
0				

SHEET STATUS  
NOT FOR CONSTRUCTION

SHEET TITLE  
FLOOR PLAN - L4

SCALE  
1:200 @A3

SHEET NUMBER REVISION

DA2105 10

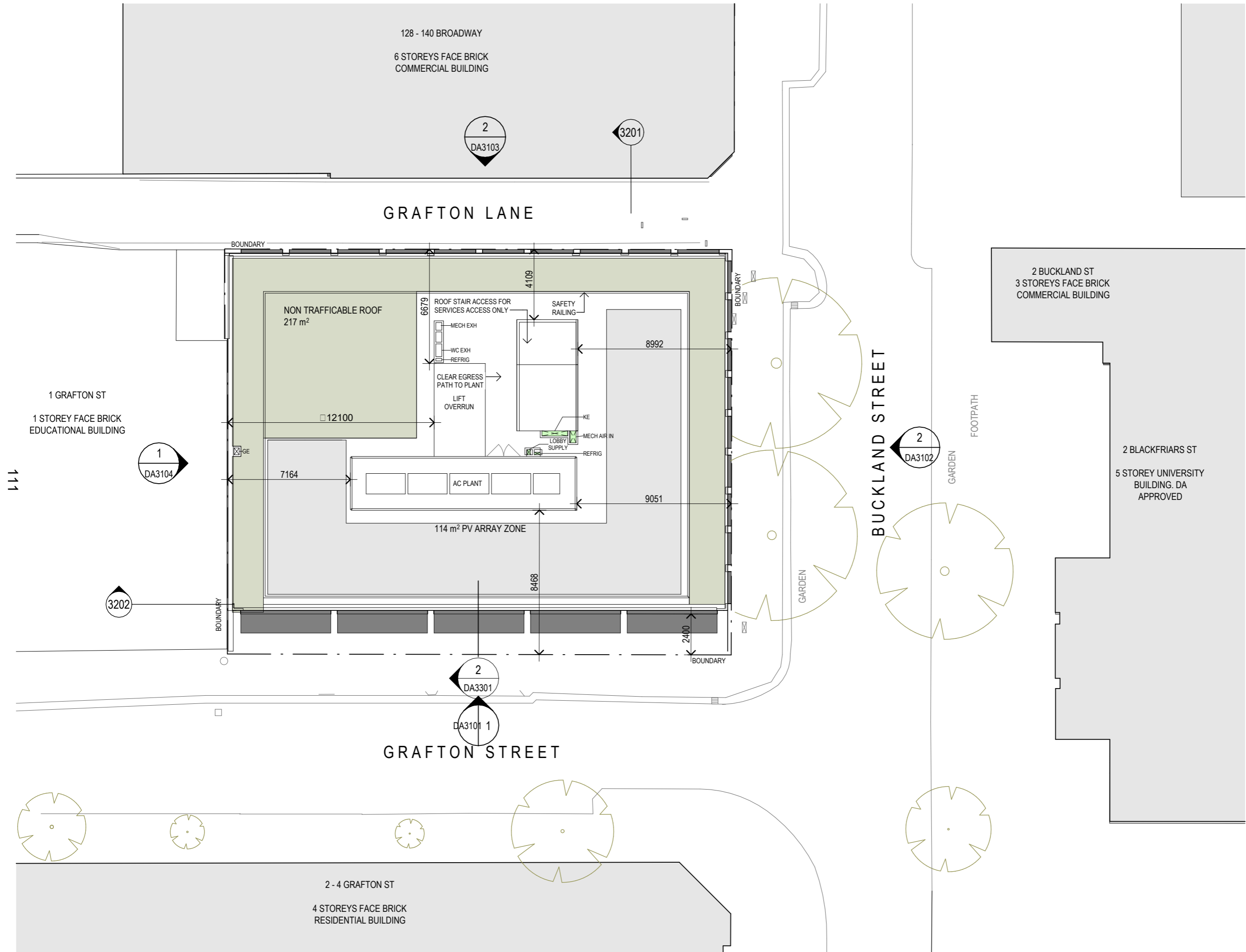


GADIGAL COUNTRY  
79 MYRTLE STREET  
CHIPPENDALE NSW, 2008 AUSTRALIA  
+61 2 9311 9222 ARCHITECTSAJC.COM  
ABN 53 003 782 250

NOMINATED ARCHITECTS:  
MICHAEL HEENAN 5264, BRIAN MARIOTTI 9451,  
JOHN WHITTINGHAM 7030

CLIENT  
GEORGE HAY Pty Ltd  
49-51 GREEK ST  
GLEBE NSW 2037  
PROJECT NO  
21026

PROJECT LOCATION  
BUCKLAND HOUSE 19- 21 BUCKLAND ST,  
CHIPPENDALE,  
NSW 2008



REV	DATE	DESCRIPTION	DN	AP
11	04.08.23	ISSUED FOR RFI (DA)	AA	JK

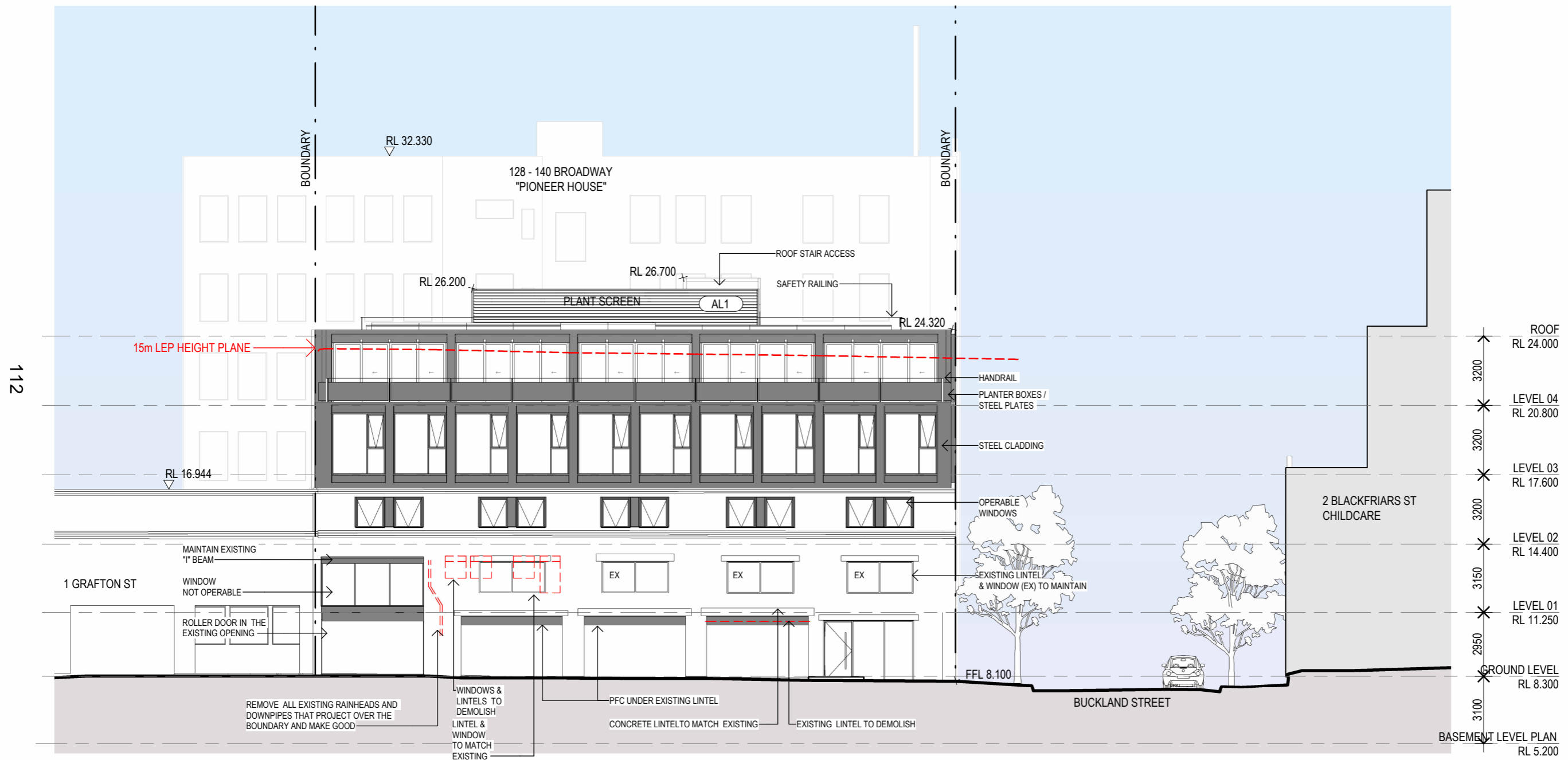
SHEET STATUS  
NOT FOR CONSTRUCTION

SHEET TITLE  
ROOF PLAN

SCALE  
1:200 @A3

SHEET NUMBER REVISION

DA2108 11



REV	DATE	DESCRIPTION	DN	AP
11	04.08.23	ISSUED FOR RFI (DA)	AA	JK

SHEET STATUS  
NOT FOR CONSTRUCTION

SHEET TITLE  
SOUTH ELEVATION

SCALE  
1:200 @A3

SHEET NUMBER	REVISION
DA3101	11



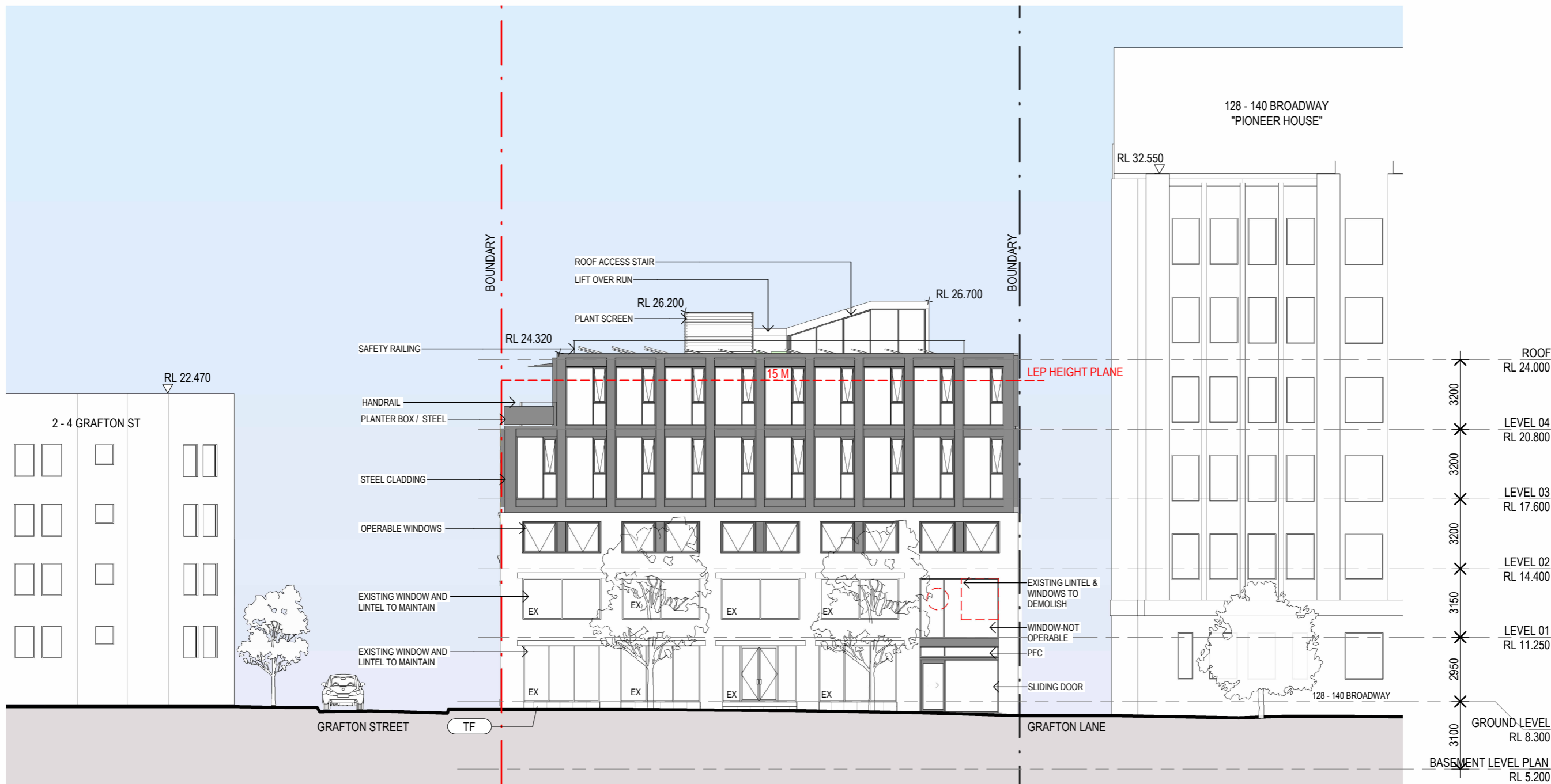
GADIGAL COUNTRY  
79 MYRTLE STREET  
CHIPPENDALE NSW, 2008 AUSTRALIA  
+61 2 9311 9222 ARCHITECTS@AJC.COM  
ABN 53 003 782 250

NOMINATED ARCHITECTS:  
MICHAEL HEENAN 5264, BRIAN MARIOTTI 9451,  
JOHN WHITTINGHAM 7030

CLIENT  
GEORGE HAY Pty Ltd  
49-51 GREEK ST  
GLEBE NSW 2037  
PROJECT NO  
21026

PROJECT LOCATION  
BUCKLAND HOUSE 19- 21 BUCKLAND ST,  
CHIPPENDALE,  
NSW 2008

113



REV	DATE	DESCRIPTION	DN	AP
12	04.08.23	ISSUED FOR RFI (DA)	AA	JK
11	23.07.23	ISSUED FOR RFI (DA)	AA	JK

**SHEET STATUS**  
NOT FOR CONSTRUCTION

**SHEET TITLE**  
EAST ELEVATION

**SCALE**  
1:200 @A3

**SHEET NUMBER**      **REVISION**

DA3102 12

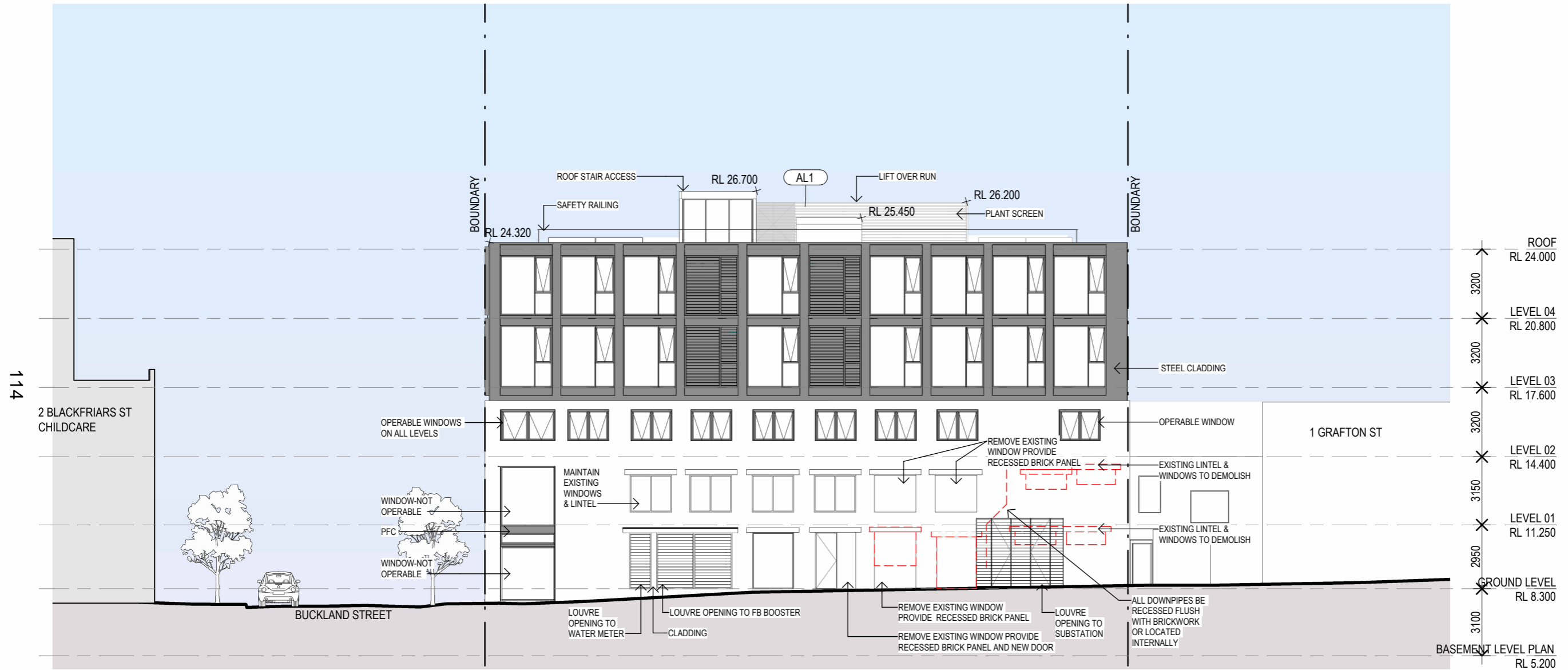


GADIGAL COUNTRY  
79 MYRTLE STREET  
CHIPPENDALE NSW, 2008 AUSTRALIA  
+61 2 9311 9222 ARCHITECTS@AJC.COM  
ABN 53 003 782 250

NOMINATED ARCHITECTS:  
MICHAEL HEENAN 5264, BRIAN MARIOTTI 9451,  
JOHN WHITTINGHAM 7030

CLIENT  
GEORGE HAY Pty Ltd  
49-51 GREEK ST  
GLEBE NSW 2037  
PROJECT NO  
21026

PROJECT LOCATION  
BUCKLAND HOUSE 19- 21 BUCKLAND ST,  
CHIPPENDALE,  
NSW 2008



REV	DATE	DESCRIPTION	DN	AP
1	04.08.23	ISSUED FOR RFI (DA)	AA	JK
0				

SHEET STATUS  
NOT FOR CONSTRUCTION

SHEET TITLE  
NORTH ELEVATION

SCALE  
1:200 @A3

SHEET NUMBER REVISION

DA3103 10



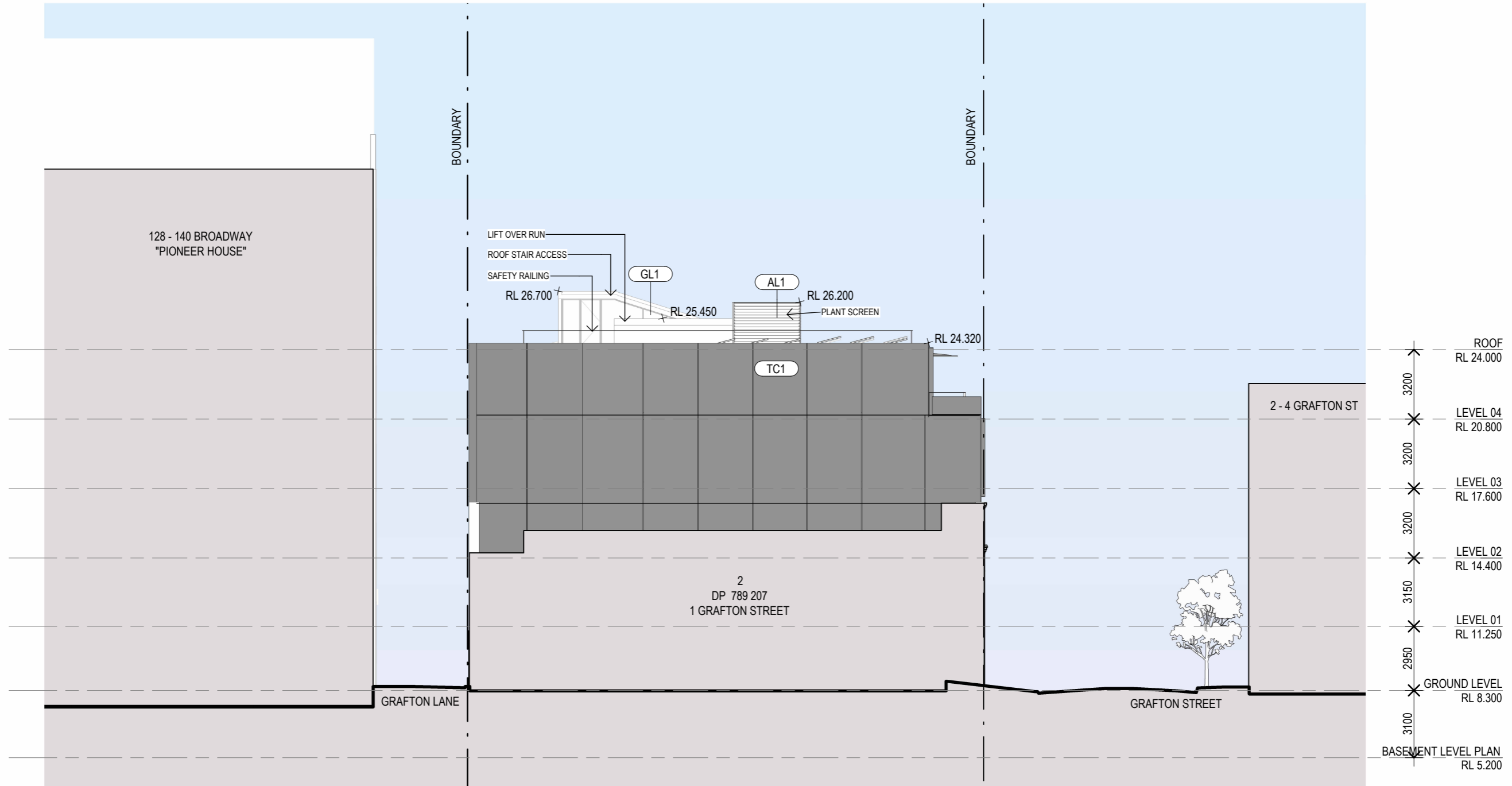
GADIGAL COUNTRY  
79 MYRTLE STREET  
CHIPPENDALE NSW, 2008 AUSTRALIA  
+61 2 9311 9222 ARCHITECTS@AJC.COM  
ABN 53 003 782 250

NOMINATED ARCHITECTS:  
MICHAEL HEENAN 5264, BRIAN MARIOTTI 9451,  
JOHN WHITTINGHAM 7030

CLIENT  
GEORGE HAY Pty Ltd  
49-51 GREEK ST  
GLEBE NSW 2037  
PROJECT NO  
21026

PROJECT LOCATION  
BUCKLAND HOUSE 19- 21 BUCKLAND ST,  
CHIPPENDALE,  
NSW 2008

115



REV	DATE	DESCRIPTION	DN	AP
11	04.08.23	ISSUED FOR RFI (DA)	AA	JK

SHEET STATUS  
NOT FOR CONSTRUCTION

SHEET TITLE  
WEST ELEVATION

SCALE  
1:200 @A3

SHEET NUMBER REVISION



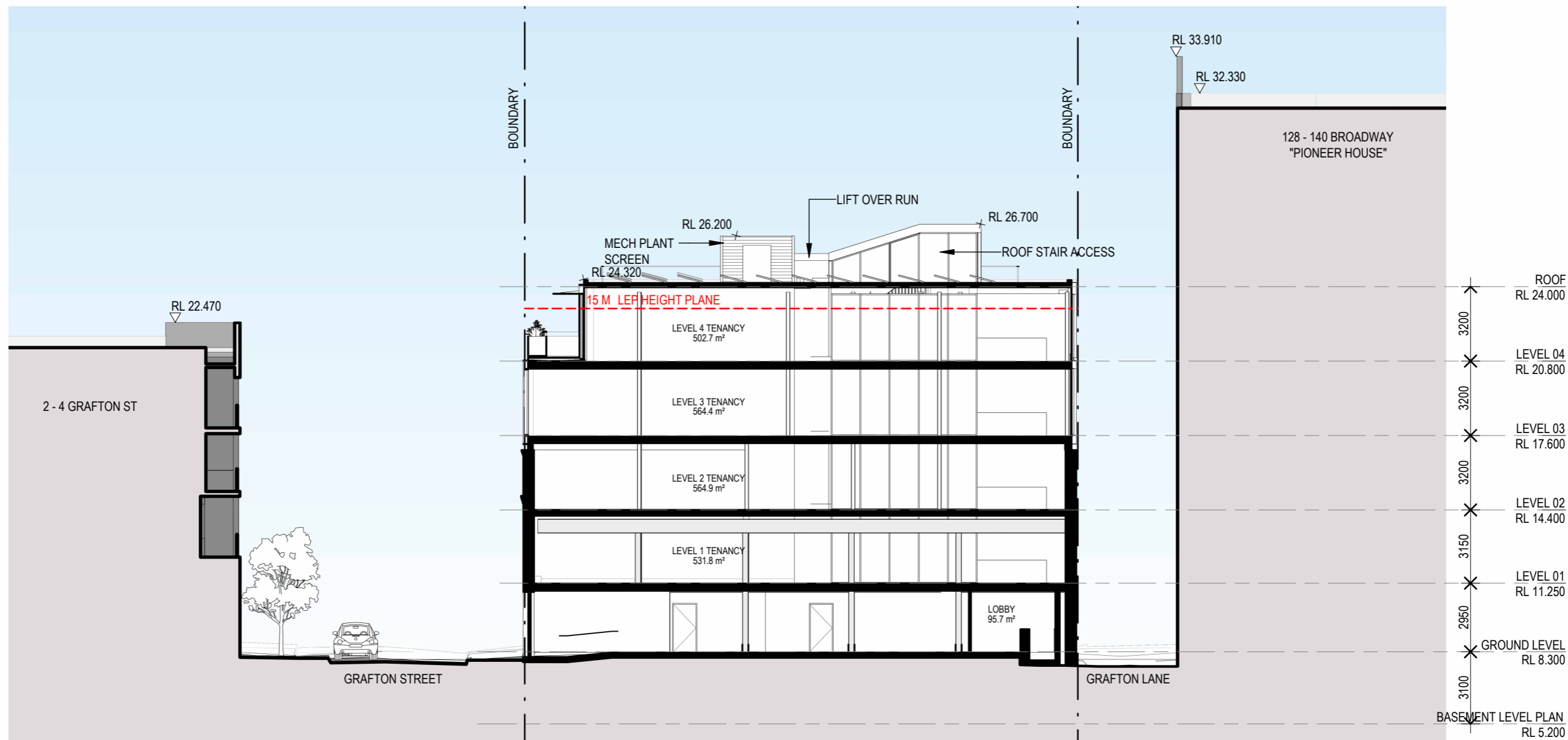
GADIGAL COUNTRY  
79 MYRTLE STREET  
CHIPPENDALE NSW, 2008 AUSTRALIA  
+61 2 9311 9222 ARCHITECTS@AJC.COM  
ABN 53 003 782 250

NOMINATED ARCHITECTS:  
MICHAEL HEENAN 5264, BRIAN MARIOTTI 9451,  
JOHN WHITTINGHAM 7030

CLIENT  
GEORGE HAY Pty Ltd  
49-51 GREEK ST  
GLEBE NSW 2037  
PROJECT NO  
21026

PROJECT LOCATION  
BUCKLAND HOUSE 19- 21 BUCKLAND ST,  
CHIPPENDALE,  
NSW 2008

116



REV	DATE	DESCRIPTION	DN	AP
8	04.08.23	ISSUED FOR RFI (DA)	AA	JK
7	23.07.23	ISSUED FOR RFI (DA)	AA	JK

SHEET STATUS  
NOT FOR CONSTRUCTION

SHEET TITLE  
SECTION - GRAFTON  
STREET  
SCALE  
1:200 @A3

SHEET NUMBER REVISION

DA3201 8





GADIGAL COUNTRY  
79 MYRTLE STREET  
CHIPPENDALE NSW, 2008 AUSTRALIA  
+61 2 9311 9222 ARCHITECTSAJC.COM  
ABN 53 003 782 250

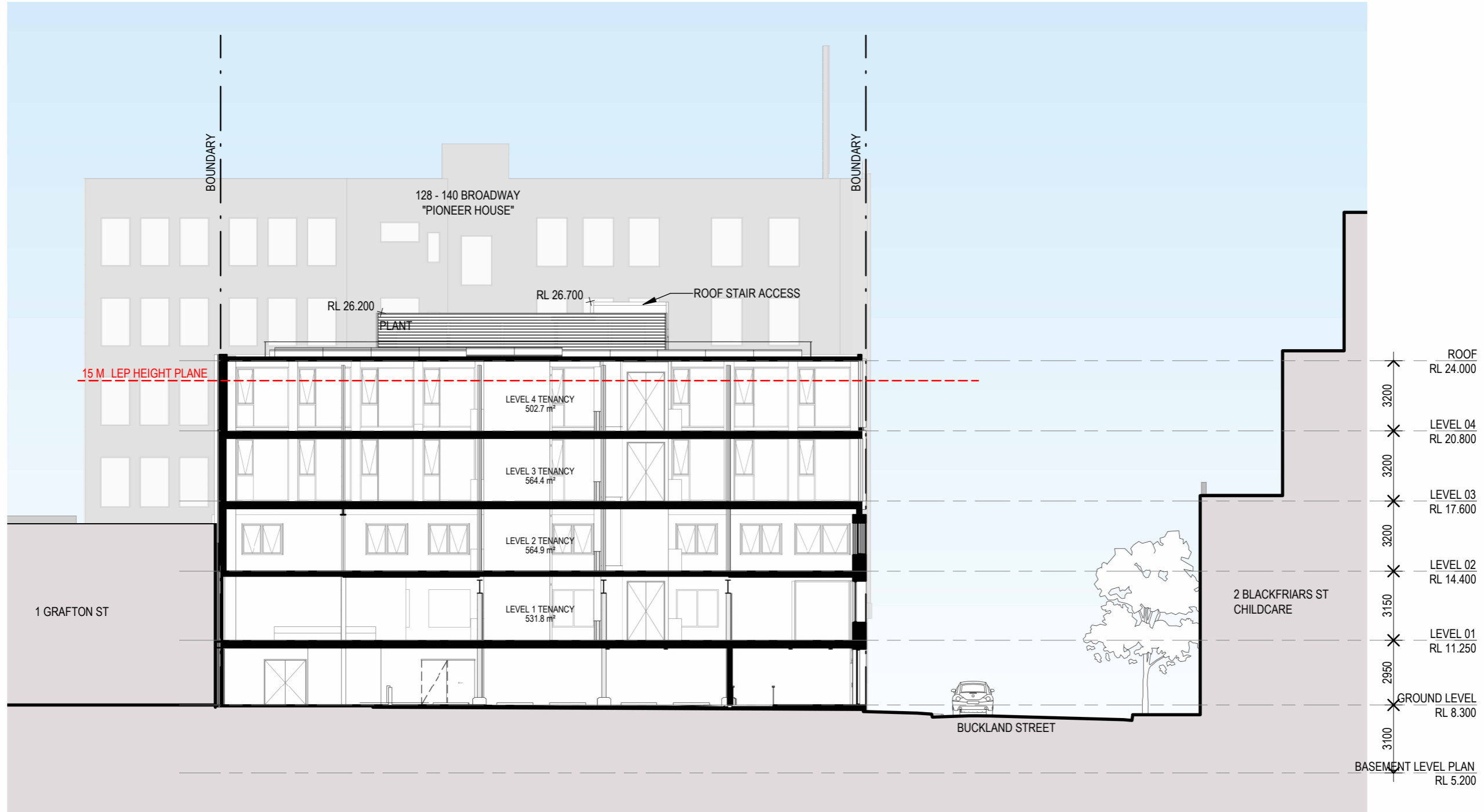
NOMINATED ARCHITECTS:  
MICHAEL HEENAN 5264, BRIAN MARIOTTI 9451,  
JOHN WHITTINGHAM 7030

CLIENT  
GEORGE HAY Pty Ltd  
49-51 GREEK ST  
GLEBE NSW 2037  
PROJECT NO  
21026

PROJECT  
BUCKLAND HOUSE

LOCATION  
19- 21 BUCKLAND ST,  
CHIPPENDALE,  
NSW 2008

117



REV	DATE	DESCRIPTION	DN	AP
7	04.08.23	ISSUED FOR RFI (DA)	AA	JK
6	23.07.23	ISSUED FOR RFI (DA)	AA	JK

SHEET STATUS  
NOT FOR CONSTRUCTION

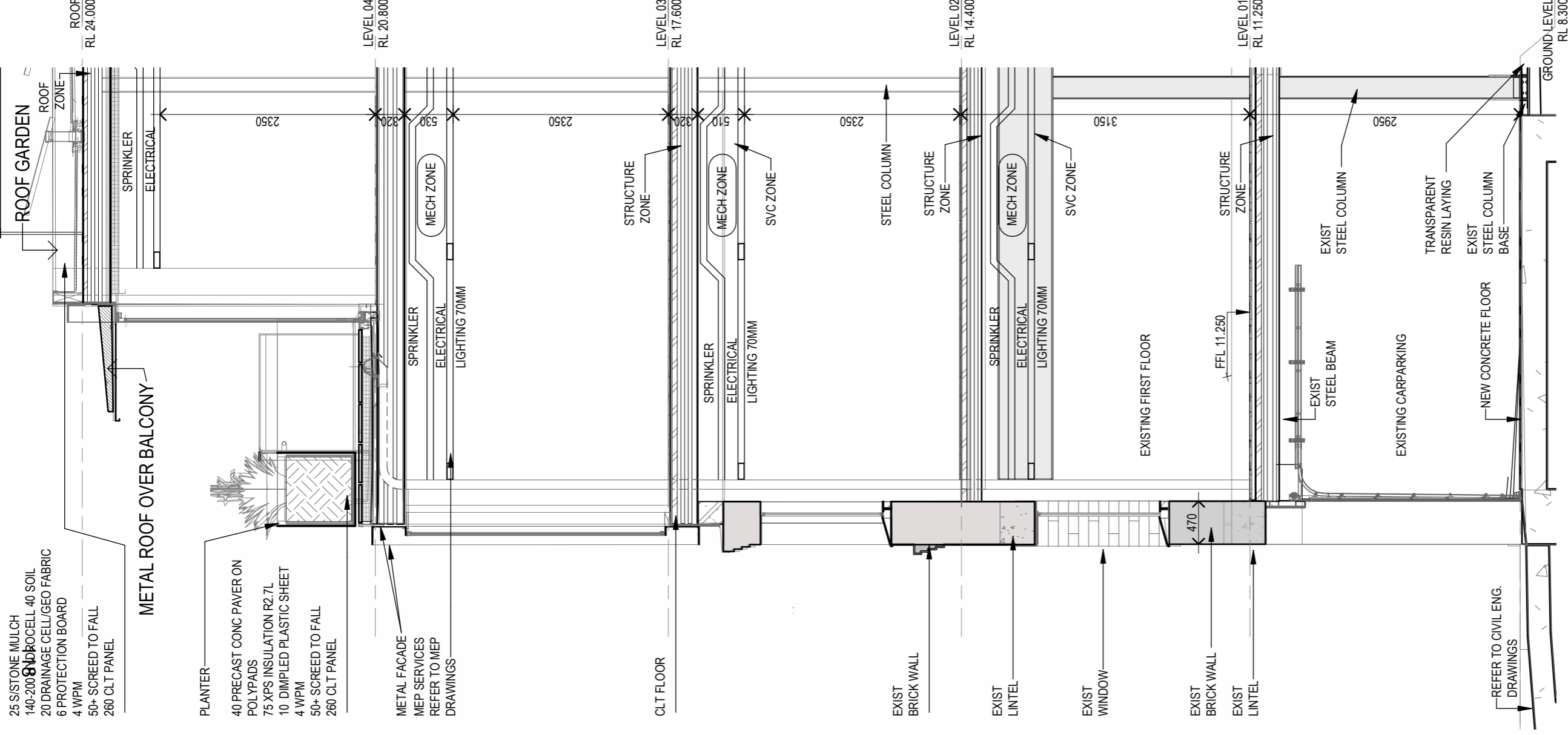
SHEET TITLE  
SECTION - BUCKLAND  
STREET

SCALE  
1:200 @A3



SHEET NUMBER

REVISION



- 25 S/STONE MULCH
- 140-200mm ROCELL 40 SOIL
- 20 DRAINAGE CELL/ GEO FABRIC
- 6 PROTECTION BOARD
- 4 WPM
- 50+ SCREED TO FALL
- 260 CLT PANEL

- PLANTER
- 40 PRECAST CONC PAVER ON POLYPADS
- 75 XPS INSULATION R2.7L
- 10 DIMPLED PLASTIC SHEET
- 4 WPM
- 50+ SCREED TO FALL
- 260 CLT PANEL

- METAL FACADE
- MEP SERVICES
- REFER TO MEP DRAWINGS

CLT FLOOR

EXIST BRICK WALL

EXIST LINTEL

EXIST WINDOW

EXIST BRICK WALL

EXIST LINTEL

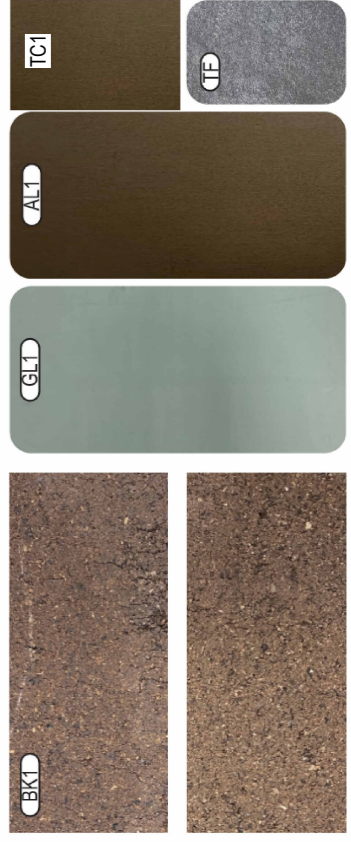
REFER TO CIVIL ENG. DRAWINGS

2 Section 16

1 : 50

1 MATERIAL BOARD

- TC1 RENDER TEXTURE COATING. COLOR TO MATCH ALT. CONTROL V JOINTS AS SHOWN.
- BK1 REMOVE EXIST CEMENT RENDER & MAKE GOOD EXIST BRICK WORK.
- AL1 METAL WINDOW FRAMES & LOUVRES FLAT DARK BRONZE-KINETIC. STEEL FRAMES PAINTED TO MATCH. EQUAL TO DULUX WEATHERMAX HBR. MC.
- GL1 CLEAR GLAZING MINIMUM VLT 46% TF TILED FLOORING GREY GRANITE



REV	DATE	DESCRIPTION	DN	AP
3	23.07.23	ISSUED FOR RFI (DA)	AA	JK

SHEET STATUS  
NOT FOR CONSTRUCTION

SHEET TITLE  
MATERIAL & DESIGN QUALITY DRAWING

SCALE  
As indicated @A3

SHEET NUMBER	REVISION
DA3301	3



GADIGAL COUNTRY  
79 MYRTLE STREET  
CHIPPENDALE NSW, 2008 AUSTRALIA  
+61 2 9371 8322 ARCHITECTSAJC.COM  
ABN 53 003 782 250

NOMINATED ARCHITECTS:  
MICHAEL HEENAN 5264, BRIAN MARIOTTI 9451,  
JOHN WHITTINGHAM 7030

CLIENT  
GEORGE HAY Pty Ltd  
49-51 GREEK ST  
GLEBE NSW 2037  
PROJECT NO  
21026

PROJECT  
BUCKLAND HOUSE

LOCATION  
79- 21 BUCKLAND ST,  
CHIPPENDALE,  
NSW 2008



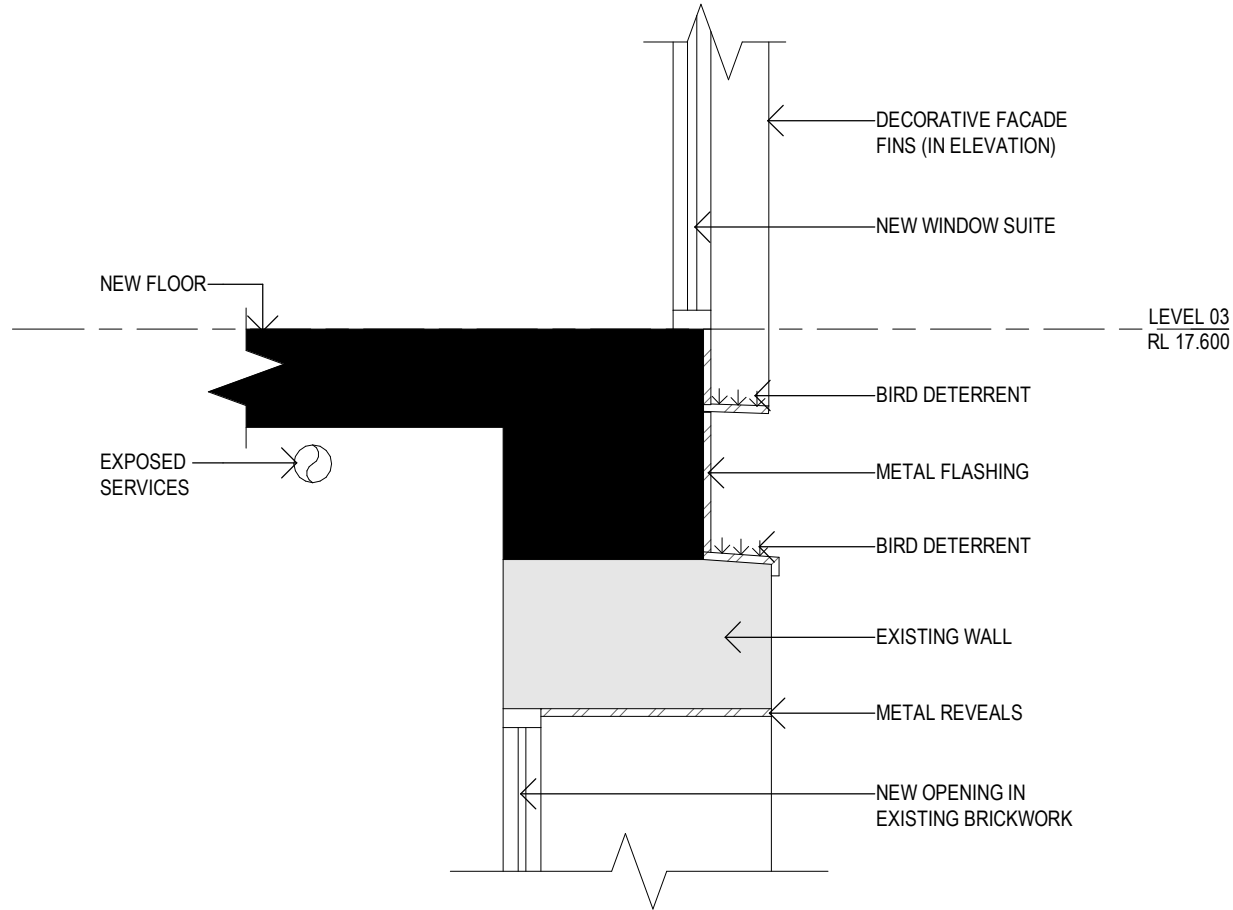
GADIGAL COUNTRY  
79 MYRTLE STREET  
CHIPPENDALE NSW, 2008 AUSTRALIA  
+612 9311 8222 ARCHITECTSAJC.COM  
ABN 53 003 782 250

NOMINATED ARCHITECTS:  
MICHAEL HEENAN 5264, BRIAN MARIOTTI 9451,  
JOHN WHITTINGHAM 7030

**CLIENT**  
GEORGE HAY Pty  
Ltd 49-S1 GREEK  
ST GLEBE NSW  
**PROJECT NO**  
21026

**PROJECT** BUCKLAND HOUSE  
**LOCATION** 19 - 21 BUCKLAND ST,  
CHIPPENDALE,  
NSW 2008

119



REV DATE	DESCRIPTION	DN	AP
1	11.04.23 FOR COUNCIL INFORMATION	HJ	BM

**SHEET STATUS**  
NOT FOR CONSTRUCTION

**SHEET TITLE**  
FACADE SECTION

**SCALE**  
1:20 @A4



**SHEET NUMBER**      **REVISION**

SK0001      1

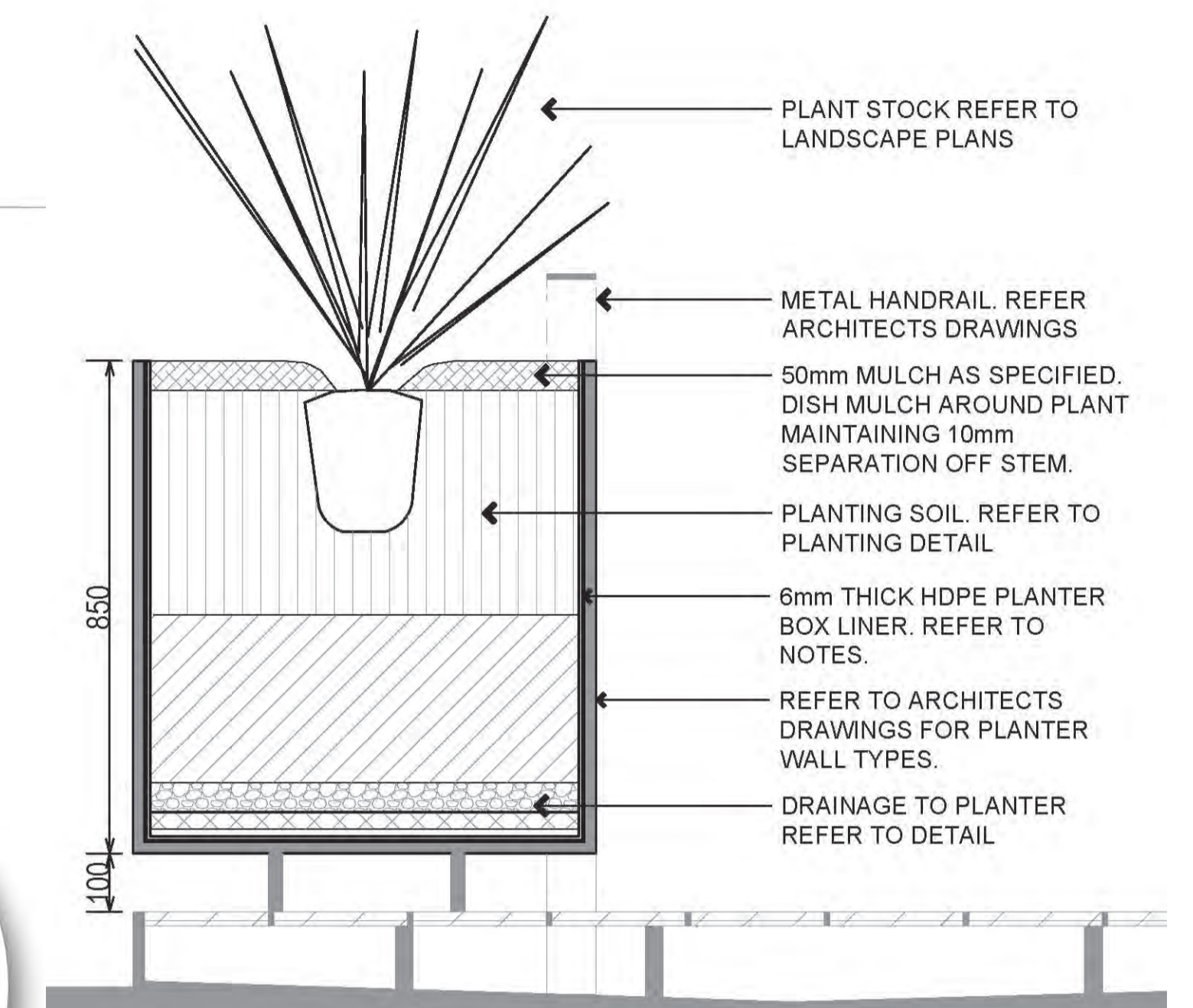
# FLOOR PLAN - L4



## L4 PLANT SCHEDULE

BOTANICAL NAME	COMMON NAME	P	O	T	SPACING SIZE
SHRUBS & GROUNDCOVERS					
<i>Philodendron 'Xanadu'</i>	Philodendron Xanadu	6L			0.5m
<i>Trachelospermum jasminoides</i>	Star Jasmine	5L			1m

## PLANTER DETAIL



## PREFABRICATED PLANTERS

Supply and install Viking Plastics freestanding self-supporting planter boxes to level 1/2 planters as detailed. Planters to be fabricated using in Paneltim 50mm thick lightweight double skin cellular sandwich Polypropylene / Polyethylene plastic panel material. Planters to be fitted with plastic welded threaded fittings, nozzles, standpipes and drain points to maintain a closed system.

Contact: Viking Plastics Ph. 03 9587 2297 [www.vikingplastics.com.au](http://www.vikingplastics.com.au)

## INDICATIVE PLANTING IMAGES

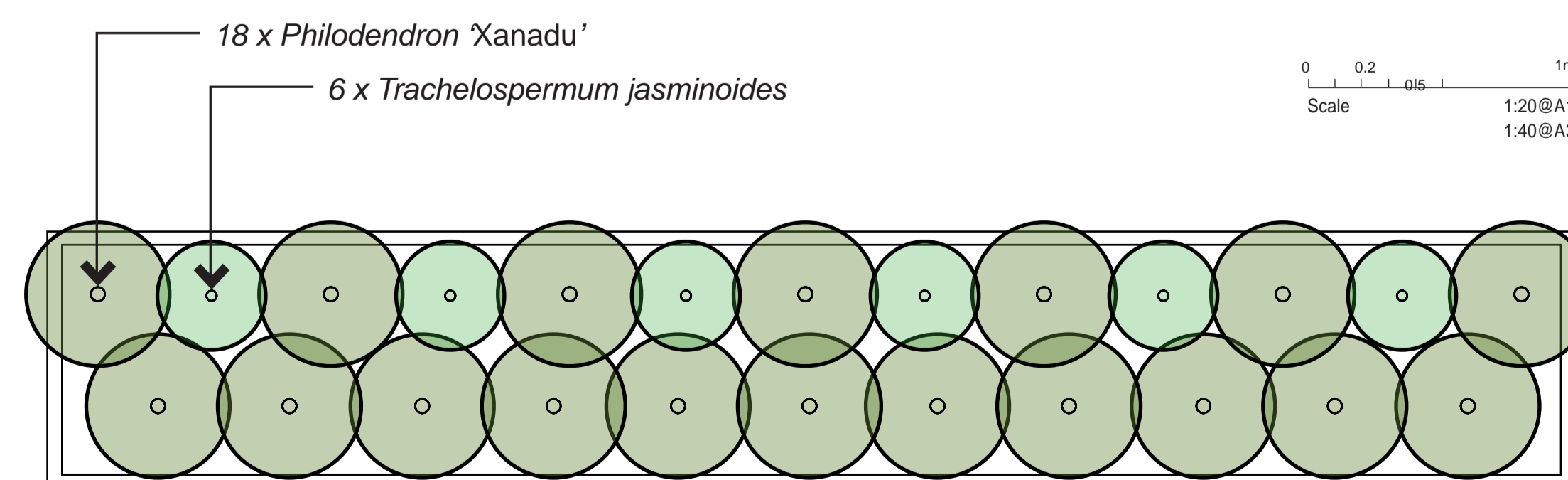


*Philodendron 'Xanadu'*



*Trachelospermum jasminoides*

## PLANTER BOX TEMPLATE



**Sturt Noble Associates**  
 Suite 307, 166 Glebe Point Road  
 Glebe NSW 2007  
 T. 02 9211 3744  
 W. [www.sturtnoble.com.au](http://www.sturtnoble.com.au)  
 landscape architecture  
 environmental & urban design

PROJECT  
**BUCKLAND HOUSE**

CLIENT  
**SPECTRUM PROPERTY & PROJECTS**

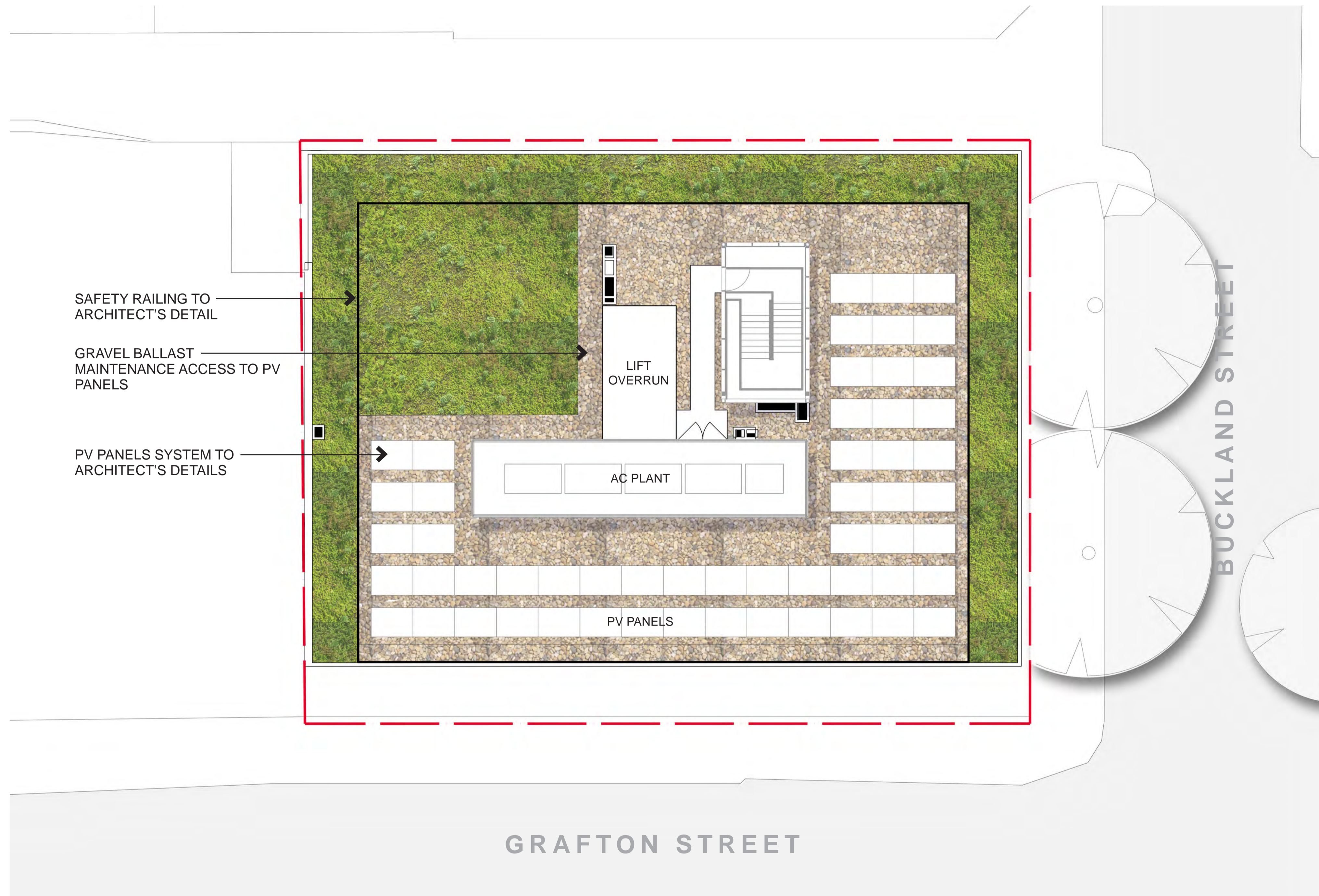
DRAWING  
**FLOOR PLAN - L4**

DRAWING No. DA-2313-01 ISSUE A DRAWN **jc** DATE **25.07.2023**

Scale 1:100@A1 1:200@A3

ACN: 164 245 514 ABN: 99 164 245 514  
 THIS DRAWING SHOULD BE READ IN CONJUNCTION WITH ALL RELEVANT CONTRACTS, SPECIFICATIONS, REPORTS AND DRAWINGS. COPYRIGHT OF THIS DRAWING IS VESTED IN STURT NOBLE ASSOCIATES PTY LTD.

# ROOF PLAN



# ROOF PLANT SCHEDULE

BOTANICAL NAME	COMMON NAME	P O T SPACING SIZE
<b>SHRUBS &amp; GROUNDCOVERS</b>		
<i>Carpobrotus glaucescens</i>	Pigface	150mm 0.5m
<i>Dianella caerulea</i> 'Little Jess'	Blue Flax-lily	150mm 0.3m
<i>Kennedia rubicunda</i>	Dusky Coral Pea	150mm 0.6m
<i>Lomandra longifolia</i> 'Tanika'	Lomandra Tanika	150mm 0.3m
<i>Myoporum parvifolium</i> 'Yareena'	Yareena Myoporum	150mm 0.5m
<i>Westringia fruticosa</i> 'Mundi'	Westringia Mundi	5L 0.5m

## FYTOGREEN GREEN ROOF SYSTEM

**A. Roof Garden**  
Install Fytogreen Green Roof system (200mm soil depth) supplied and specified by Fytogreen Australia Pty. Ltd. Contact: 3 Webbs Lane, Somerville, VIC 3912 www.fytogreen.com.au, ph. 1300 182 341 E. info@fytogreen.com.au.

General specification is as follows:

**B. LDPE layer at a minimum of 200 micron**  
This layer is 200-300µ thick with a gsm of approximately 200gm. The function is a protection layer to the membrane at the initial installation stage, as well as a long-term root protection layer for the membrane. Coreflute protection board Minimum 2.5 mm for vertical planter wall membrane protection.

**C. Drainage Cell**  
Atlantis Flocell 20 drainage cell. The drainage cell is HDPE with a crush strength of 200kPa and is fungus resistant. The thickness is 20mm with a weight of 1500gsm. Flo cell 20 will hold 1.8lt/m2 of water in the cusp's for re-absorption by roots when required. Flow rate of 200lt/min at a 1% gradient.

**D. Geofabric**  
Bidim A14-A24 Bidim "A" is a non-woven, needle punched, continuous filament, polyester textile made in Australia from recycled polymer. The geofabric layer is 2mm thick and has a wet weight of 360gsm.

**E. Hydrocell RG30 – Water Reservoir Layer**  
Hydrocell is a proprietary urea aldehyde resin based hardfoam that is either manufactured directly onto the roof or delivered in a pre-manufactured sheet composition, as either a 60mm or 100mm layer.

**F. Hydrocell 40 Lightweight Planter Media**  
Hydrocell 40 Lightweight Planter Media is a proprietary engineered combination of medium washed sand and scoria (other mineral material is used where scoria is not economically available), composted pine bark and hydrocell flakes. The thickness is specific to the weight allowance for the project, but as a guide 12kg/m2/10mm of depth as a saturated weight allowance.

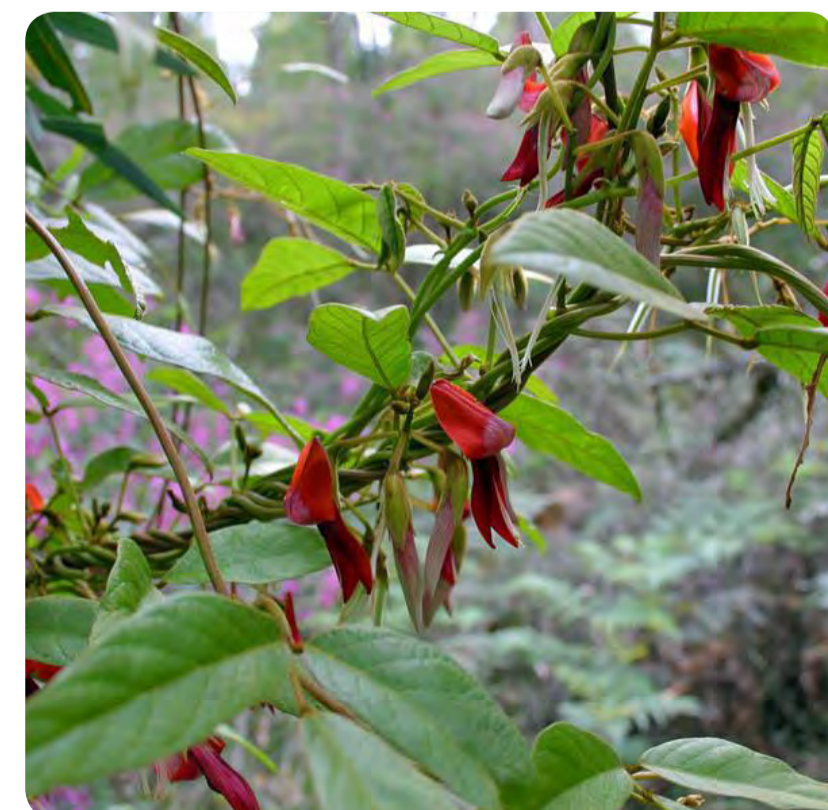
## INDICATIVE PLANTING IMAGES



*Carpobrotus glaucescens*



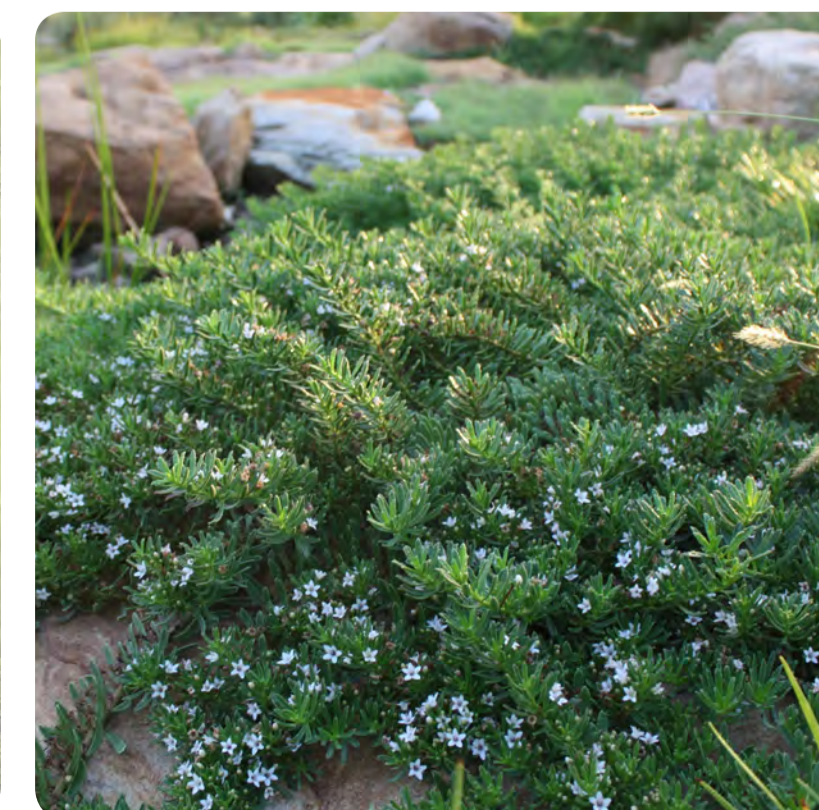
*Dianella caerulea* 'Little Jess'



*Kennedia rubicunda*



*Lomandra longifolia* 'Tanika'



*Myoporum parvifolium* 'Yareena'



*Westringia fruticosa* 'Mundi'

Suite 307, 166 Glebe Point Road  
Glebe NSW 2007  
T. 02 9211 3744  
W. www.sturnoble.com.au  
landscape architecture  
environmental & urban design

**Sturt Noble**  
Associates

PROJECT  
**BUCKLAND HOUSE**

CLIENT  
**SPECTRUM PROPERTY & PROJECTS**

DRAWING  
**ROOF PLAN**

DRAWING No. DA-2313-02 ISSUE A DRAWN jc DATE 25.07.2023



Scale 0 1 5m  
1:100@A1  
1:200@A3

ACN: 164 245 514 ABN: 99 164 245 514  
THIS DRAWING SHOULD BE READ IN CONJUNCTION WITH ALL RELEVANT CONTRACTS, SPECIFICATIONS, REPORTS AND DRAWINGS. COPYRIGHT OF THIS DRAWING IS VESTED IN STURT NOBLE ASSOCIATES PTY LTD.